

# GE552Y190/191/195/196 (GE552-2)



Water  
Management

## Domestic water meters for wired M-Bus centralization

Datasheet  
0474EN 11/2022



GE552Y190, GE552Y195  
COLD WATER



GE552Y191, GE552Y196  
HOT WATER

Domestic single-jet water meter **GE552-2**, with dry dial and pulse output for optional data remoting. This device features a very low initial flow rate and can be installed both horizontally and vertically. Thanks to its compact design, it can be installed in confined spaces or locations difficult to reach.

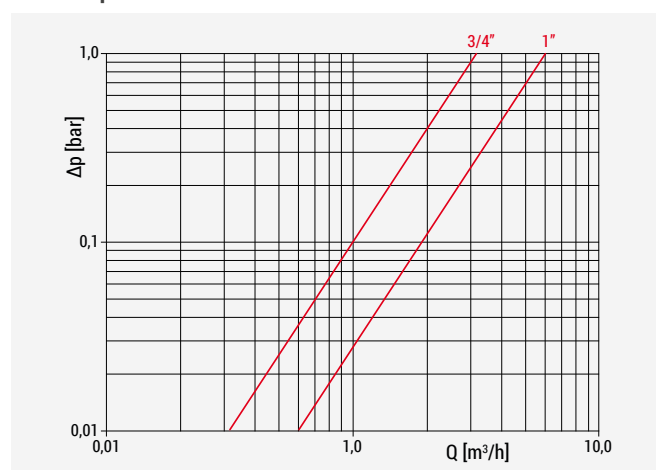
### ➤ Versions and product codes

PRODUCT CODE	CONNECTIONS		CENTER DISTANCE [mm]	DOMESTIC WATER TYPE	CENTRALIZATION
GE552Y190	DN15	G 3/4"M	110	Cold	Pulse output (REED contact) for wired M-Bus centralization
GE552Y191	DN15	G 3/4"M	110	Hot	
GE552Y195	DN20	G 1"M	130	Cold	
GE552Y196	DN20	G 1"M	130	Hot	

## Technical data

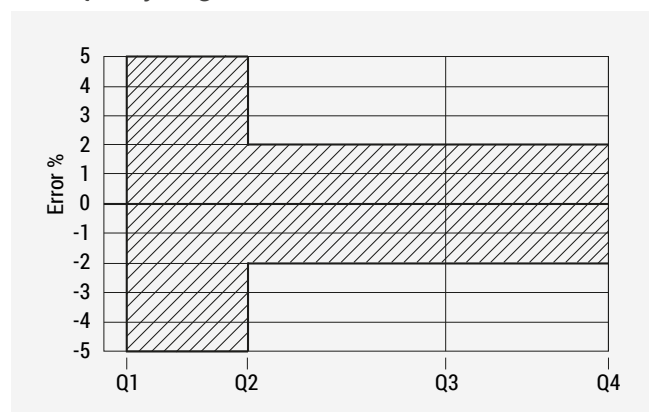
- Max. working temperature:  
30 °C for domestic cold water meter  
90 °C for domestic hot water meter
- Max. working pressure: 16 bar
- Horizontal or vertical installation
- Dial with mechanical totalizers and index for partial consumptions and flow rate
- Pulse output with M-Bus presetting (1 pulse = 10 liters)
- CE marking (MID compliance)

### Loss of pressure



PRODUCT CODE	Kv
GE552Y190	3,2
GE552Y191	3,2
GE552Y195	6,0
GE552Y196	6,0

### Error quality diagram



### GE552Y190, GE552Y191 (3/4")

INSTALLATION	Q3 [m³/h]	Q1 [m³/h]	Q2 [m³/h]	Q4 [m³/h]
Horizontal	2,5	0,031	0,05	3,1
Vertical	2,5	0,063	0,1	3,1

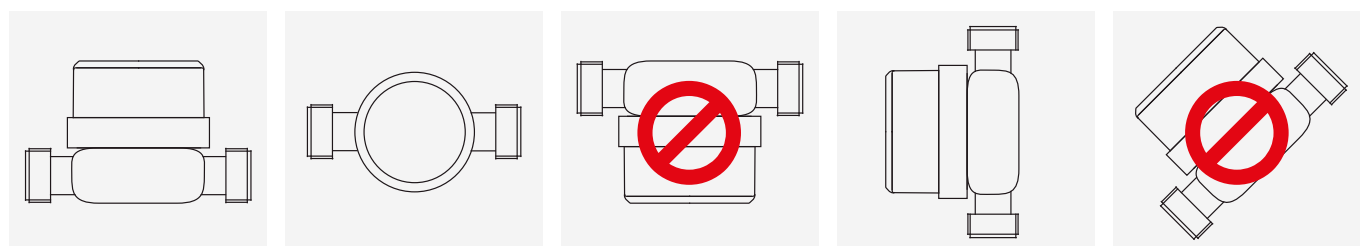
Q2 / Q1 = 1,6  
Q3 / Q1 = 80 (horizontal installation)  
Q3 / Q1 = 40 (vertical installation)

### GE552Y191, GE552Y196 (1")

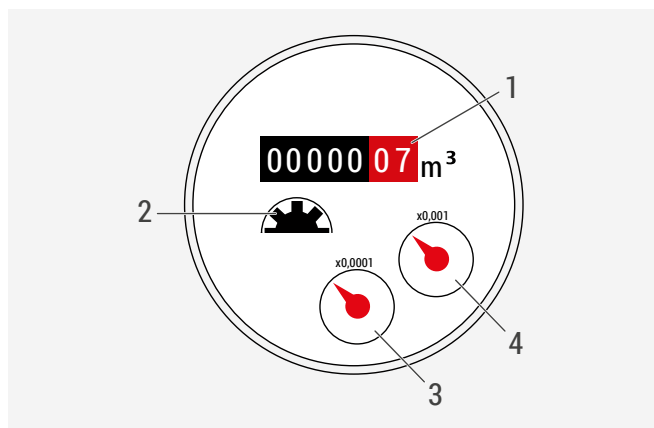
INSTALLATION	Q3 [m³/h]	Q1 [m³/h]	Q2 [m³/h]	Q4 [m³/h]
Horizontal	4,0	0,05	0,08	5
Vertical	4,0	0,1	0,16	5

Q2 / Q1 = 1,6  
Q3 / Q1 = 80 (horizontal installation)  
Q3 / Q1 = 40 (vertical installation)

## Allowed installation positions



## Operation



- 1 7-digit mechanical totalizer for cumulative consumption (max. value 99999,99 m³)
- 2 Rotary indicator for control of flow presence
- 3 Totalizers for current consumptions (1 turn = 0,1 liter)
- 4 Totalizers for current consumptions in liters (1 turn = 1 liter)

The water meter includes a nickel-plated brass flow rate meter section housing, the single-jet rotor and a totalizer protected by a clear plastic cover.

The inlet features a filter that stops larger debris from entering the meter chamber.

The 7-digit totalizer shows the cumulative domestic water consumption; this is a mechanical device and requires no power.

A rotary indicator signals the presence of a flow, while a totalizer shows the current consumption in liters.

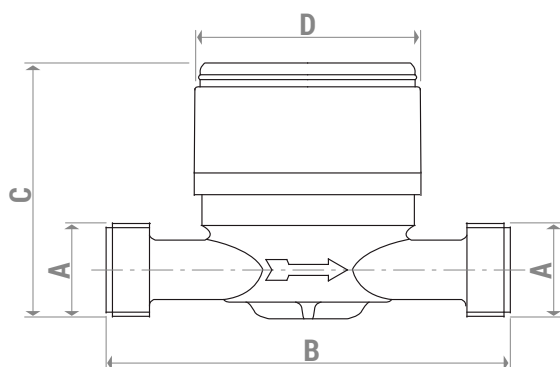
The device features a pulse output; 1 pulse corresponds to a 10-liter volume.

A 1,4 m cable connects the water meter to an interface which turns the pulses in a consumption value that can be codified and transmitted through the M-Bus system for remote reading and centralization of consumption data.

## Data centralization

It is possible to remotely control the meter data via the **GE552** energy meters and the **GE552-4** components for centralization.

## Dimensions



PRODUCT CODE	CONNECTIONS A	B [mm]	C [mm]	D [mm]
GE552Y190	G 3/4"M	110	76	66
GE552Y191	G 3/4"M	110	76	66
GE552Y195	G 1"M	130	79	66
GE552Y196	G 1"M	110	79	66

**⚠ WARNING.** Leave a minimum space of 30 mm required for installation.

## ➤ MID compliance

When used for commercial transactions, energy meters are classified as measurement instruments subject to legal metrology standards. GE552 and GE552-W meters comply to the provisions of Directive 2014/32/EU for measuring instruments (MID Directive - Measurement Instrument Directive), received in Italy by Law Decree dated 2 February 2007, n. 22 (Government Gazette n. 64 of 17 March 2007). The compliance certificate DE-07-MI001-PTB010 has been issued by the PTB metrology institute (Physikalisch-Technische Bundesanstalt).

🔗 **NOTE.** The additional metrological marking is on the front of every device, next to the CE symbol, and it includes an "M" followed by the last two numbers of the marking year inside a rectangle.

## ➤ Reference standards

- CE marking
- MID directive (2014/32/EU)

## ➤ Product specifications

### GE552Y190

Single-jet domestic cold water meter. Connections G 3/4" M. DN15. Pulse output for optional data remoting, pulse output K=10 L/pulse. Permanent flow rate Q<sub>3</sub> 2,5 m<sup>3</sup>/h. Installation center distance 110 mm. Max. working temperature 30 °C. Max. working pressure 16 bar. CE marking (MID compliance).

### GE552Y191

Single-jet domestic hot water meter. Connections G 3/4" M. DN15. Pulse output for optional data remoting, pulse output K=10 L/pulse. Permanent flow rate Q<sub>3</sub> 2,5 m<sup>3</sup>/h. Installation center distance 110 mm. Max. working temperature 90 °C. Max. working pressure 16 bar. CE marking (MID compliance).

### GE552Y195

Single-jet domestic cold water meter. Connections G 1" M. DN20. Pulse output for optional data remoting, pulse output K=10 L/pulse. Permanent flow rate Q<sub>3</sub> 4,0 m<sup>3</sup>/h. Installation center distance 130 mm. Max. working temperature 30 °C. Max. working pressure 16 bar. CE marking (MID compliance).

### GE552Y196

Single-jet domestic hot water meter. Connections G 1" M. DN20. Pulse output for optional data remoting, pulse output K=10 L/pulse. Permanent flow rate Q<sub>3</sub> 4,0 m<sup>3</sup>/h. Installation center distance 130 mm. Max. working temperature 90 °C. Max. working pressure 16 bar. CE marking (MID compliance).

⚠ **Safety Warning.** Installation, commissioning and periodical maintenance of the product must be carried out by qualified operators in compliance with national regulations and/or local standards. A qualified installer must take all required measures, including use of Individual Protection Devices, for his and others' safety. An improper installation may damage people, animals or objects towards which Giacomini S.p.A. may not be held liable.

♻ **Package Disposal.** Carton boxes: paper recycling. Plastic bags and bubble wrap: plastic recycling.

ℹ **Additional information.** For more information, go to [giacomini.com](http://giacomini.com) or contact our technical assistance service. This document provides only general indications. Giacomini S.p.A. may change at any time, without notice and for technical or commercial reasons, the items included herewith. The information included in this technical sheet do not exempt the user from strictly complying with the rules and good practice standards in force.

🗑 **Product Disposal.** Do not dispose of product as municipal waste at the end of its life cycle. Dispose of product at a special recycling platform managed by local authorities or at retailers providing this type of service.