

GE552Y056

User Guide

Rev 3.5



This user guide applies to software
versions from: 3.0.10

TABLE OF CONTENTS

1.	SOFTWARE INSTALLATION.....	3
1.1	System requirements.....	3
1.2	Installing the GE552Y056 software	3
2.	LOGIN	6
3.	SETTINGS.....	7
3.1	GE552Y056	Errore. Il segnalibro non è definito.
4.	PLANT SECTION.....	8
4.1	Homepage	8
4.2	Creating a new plant	10
4.3	Opening an existing plant	11
4.4	Delete plant.....	12
4.5	Close Plant.....	12
5.	MANAGEMENT OF M-BUS DEVICES ON WIRED SYSTEMS	13
5.1	GE552Y050 connection	13
5.2	Connecting the GE552Y059.....	13
5.3	M-Bus Interface settings and GE552Y050 and GE552Y059 firmware upgrade	14
5.4	Wired section (M-Bus).....	16
5.5	Meter search	17
5.6	Meter addressing	19
5.7	Meter Setup.....	22
5.8	Readout.....	23
6.	READOUT SECTION.....	24
6.1	Open Readout.....	24
6.2	Excel Report	26
7.	GE552Y053 DEVICE MANAGEMENT ON WIRELESS PLANT	27
7.1	Connecting a GE552Y053 repeater	27
7.2	Wireless Section (W. M-Bus).....	28
7.3	GE552Y053 Repeater Firmware Update.....	28
7.4	Access to the Repeater	29
7.5	Change Repeater Login Password	30
7.6	Setting a Mesh Network Address (on RTU) and on Repeaters.....	31
7.7	Uploading a list of available W. M-Bus devices in the plant on repeaters.....	33
7.8	Special cases	35

1. SOFTWARE INSTALLATION

1.1 System requirements

The following minimum system requirements must be met to ensure proper operation of the GE552Y056:

- Operating System: Windows XP, Windows Vista, Windows 7, Windows 8, Windows 10
- HW features: 32 bit or 64 bit processor, 1 USB port 1.1 or upper
- Minimum support resolution: 1280x768

1.2 Installing the GE552Y056 software

Follow the procedure to install the management software.

Double-click on the icon  and follow the next steps

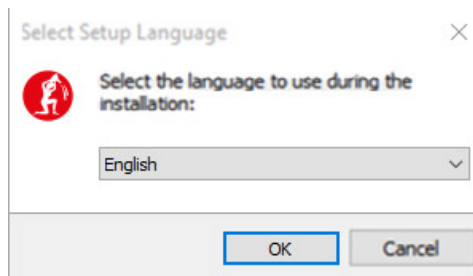


Figure 1 - Installation Step 1

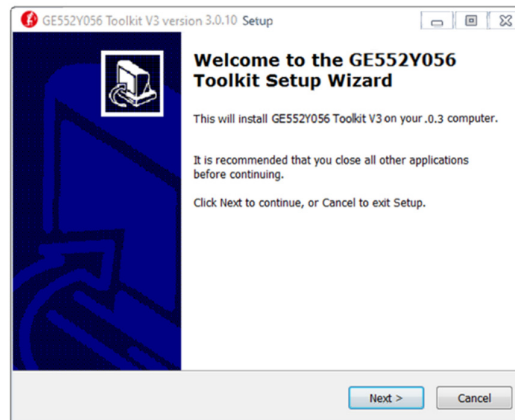


Figure 2 - Installation Step 2

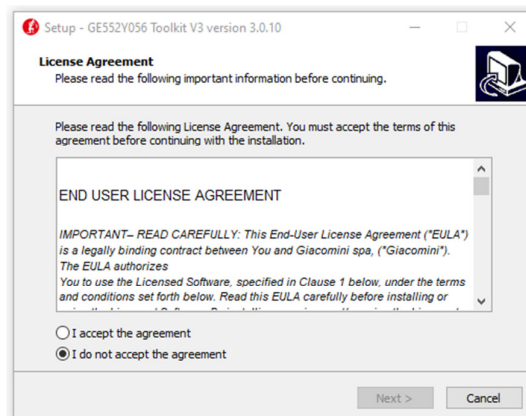


Figure 3 - Installation Step 3

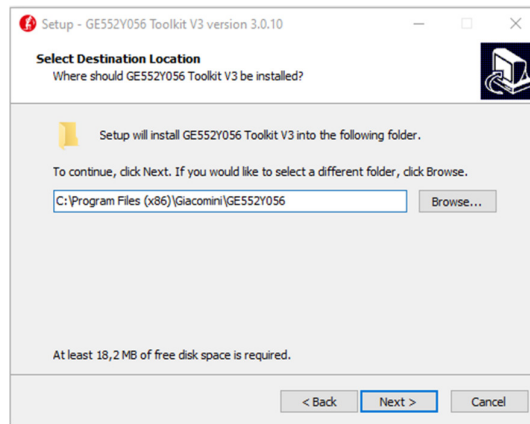


Figure 4 - Installation Step 4

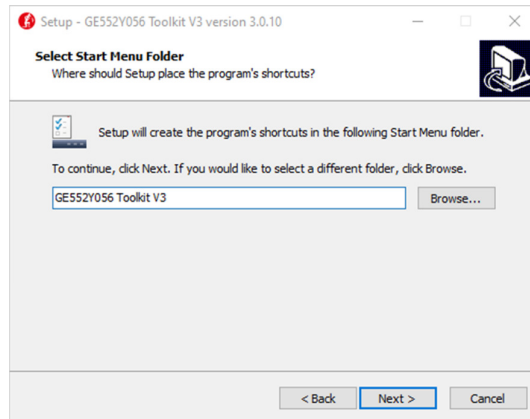


Figure 5 - Installation Step 5

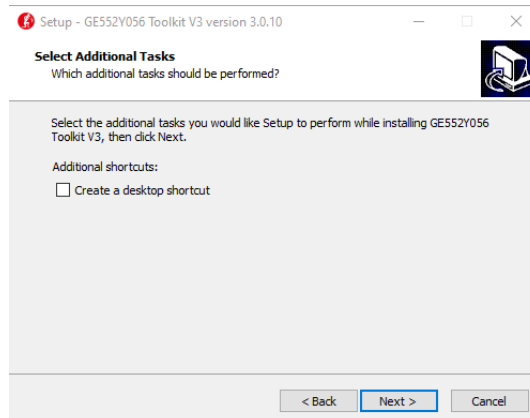


Figure 6 - Installation Step 6

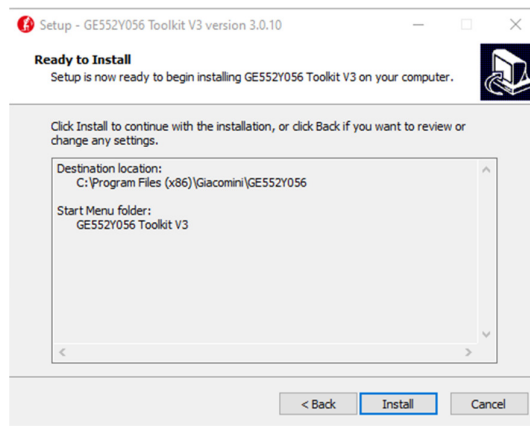


Figure 7 - Installation Step 7

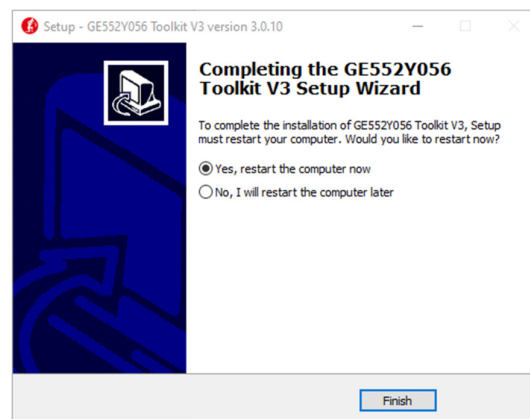


Figure 8 - Installation Step 8

If necessary, you will be prompted to install the “Visual C++ 2012 Runtime” software on your PC.

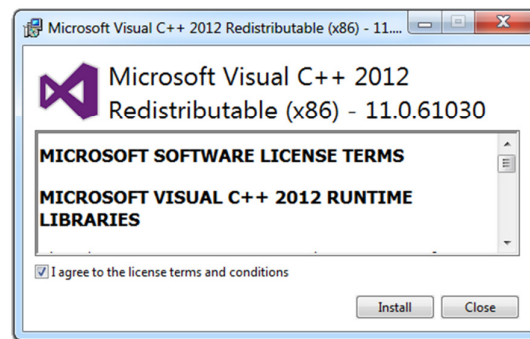


Figure 9 - Installation Step 9

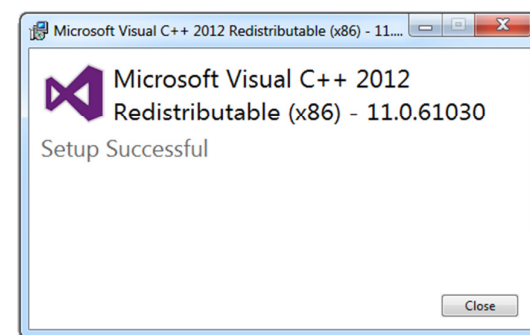


Figure 10 - Installation Step 10

2. LOGIN

Double-click on the icon to open GE552Y056



The software homepage is a login window where you are prompted to enter your credentials (User name/Password) which, by default, are:

- **User name:** admin
- **Password:** admin



Figure 11 – Log in

When logging in, you can select the language among those available. The selected language setting is stored by the software and reused for subsequent access.

NOTE: It is recommended that you change your password as soon as possible. See paragraph 3.5

3. SETTINGS

Section dedicated to GE552Y056 software and communication interfaces settings.

3.1 GE552Y056

This section lets you run the following:

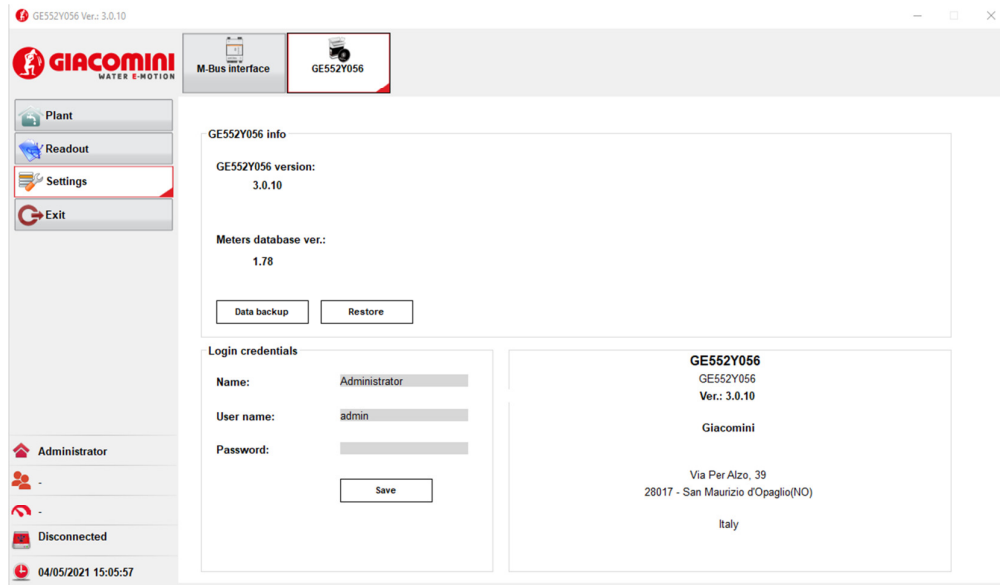


Figure 12 - Toolkit Setup

- **GE552Y056 update**
 - **GE552Y056 version:** reports the version of the Toolkit. You can update it by selecting "Search for online updates"
 - **Meters database ver.:** shows the version of the meter database currently being used. You can update it by pressing "Search for online updates"
 - **Data Backup:** select to backup all data acquired and software settings.
 - **Restore:** Lets you import the file created with the "Data Backup" option
- **Login credentials**
 - **Name:** name of the user logging in
 - **User name:** Toolkit user login nickname. Admin by default
 - **Password:** Toolkit user login password. Admin by default

Press **Save** to save account settings.

4. PLANT SECTION

4.1 Homepage

The software homepage is illustrated below:

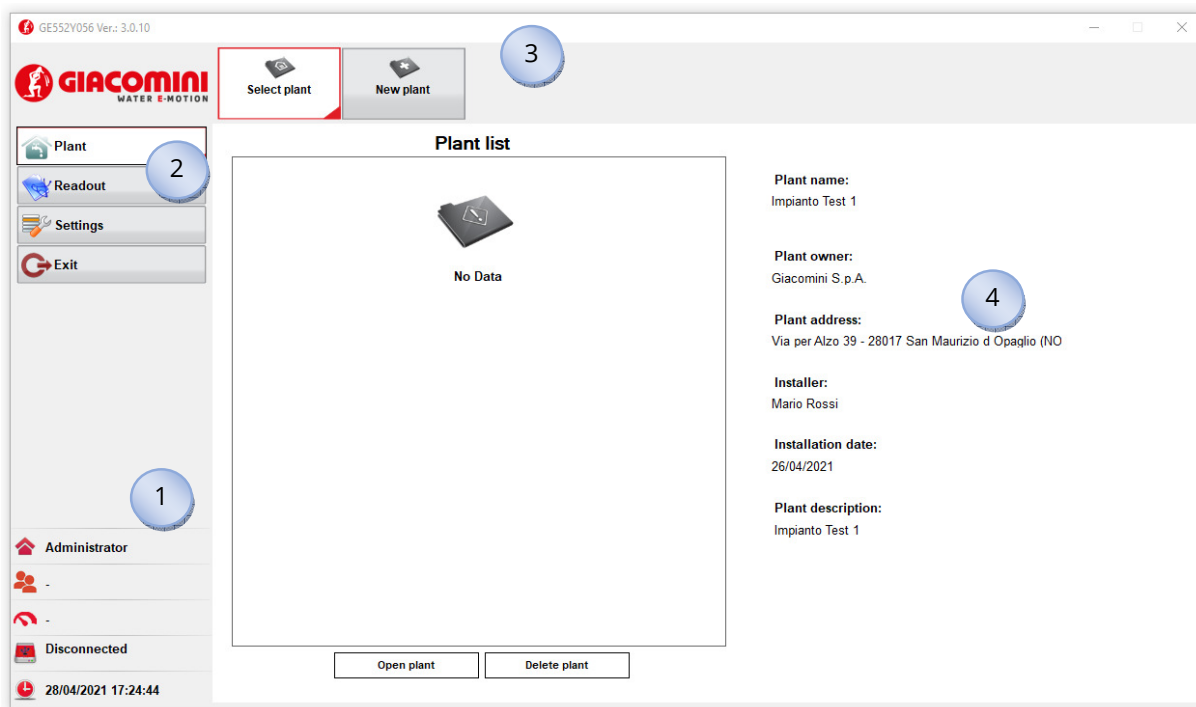



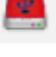





Figure 13 - Homepage

The window is divided into four sections:


- 1 Status of the system with the main indications listed below:
-  indicates the user who has logged in
 -  shows the name of the open plant being worked on
 -  indicates BUS activities
 -  shows the connection status of the device of the level converter
 - Connected: the device is connected correctly to the PC
 - Init. in progress: check for any fw upgrade for LC1
 - Disconnected: the device is not connected to the PC
 -  shows the date and time of your PC

Main Menu:

- 2
-  open the Plant section
 -  open the readout section

-
-  **Settings** open the settings section
 -  **Exit** exit the program
-

Shows a submenu with the items of the section selected from the main menu.

- **PLANT:**
 1. No open plant being worked on:
 - **Select Plant** → Lets you open a plant
 - **New Plant** → Lets you create a new plant
 2. With Plant being worked on open and indicated in 
 - **Plant Information** → Summary of plant data
 - **Plant settings** → Edit plant data
 - **Wired Section (M-Bus)** → Wired M-Bus plant management
 - **Meter setup** → Edit wired meter settings connected to the opened plant being worked on
 - **Meter Search** → Use to search for wired meters connect to the bus
 - **Readout** → Allows a Readout of all wired meters connected to the plant
 - **Device Addressing** → use to address all or only some of the M-Bus devices belonging to the system as primary
 - **Wireless Section (W.M-Bus)** → W. M-Bus plant management
 - **Repeater configuration** → Edit GE552Y053 (*) repeaters settings in the opened plant being worked on
 - **Manage access to the Repeater** → Use to manage the list of W. M-Bus meters saved by Repeaters.
 - **Delete Plant** → Allows you to delete the plant being worked on
 - **Close Plant** → Allows you to close the plant being worked on
- **READOUT:**
 1. No open plant being worked on:
 - **Open Readout** → Allows you to access all the readouts of all the plants to view the data or create a report in XLS or CSV format
 2. With an open plant being worked on (Indicated in section 1)
 - **Open Readout** → Allows you to access all the readouts of the open plant to view the data or create a report in XLS or CSV format
- **SETTINGS:**
 - **M-Bus Interface:** Allows you to access the settings pertaining to the use of the level converter
 - **GE552Y056:** Allows you to access the settings pertaining to the use of the software
- **EXIT:** Program shutdown. (Save any changes before logging out).

4

This section shows the content according to the selected menu (2) and submenu (3).

* Below will be called **Repeater**

4.2 Creating a new plant

To create a new plant, close any open plants, go to **Plant** in the main menu and select **New Plant**.

GES2Y056 Ver.: 3.0.10

GIACOMINI
WATER E-MOTION

Select plant New plant

Plant
Readout
Settings
Exit

Plant name:
Impianto Test 1

Plant owner data

Name / Company name:
Giacomini S.p.A.

Address:
via per Alzo 39 - 28017 S. Maurizio d'Opaglio (NO) Italy

Phone:
+39 0322 923111

Email:
info@giacomini.com

Building administrator data

Name / Company name:
Giacomini S.p.A.

Address:
via per Alzo 39 - 28017 S. Maurizio d'Opaglio (NO) Italy

Phone:
+39 0322 923111

Email:
info@giacomini.com

Plant data

Plant address:
via per Alzo 39 - 28017 S. Maurizio d'Opaglio (NO) It

Installer:
Giacomini S.p.A.

Installation date:
30/04/2021

Acquisition period:
Monthly

Plant description:
Impianto Test 1

OK

Administrator
Disconnected
30/04/2021 09:16:43

Figure 14 – Plant, New plant

Below are the fields to be filled out. Fields highlighted in **Red** are required

1. **Plant name**: associate an unambiguous name to the plant
2. Plant owner data
 - Name/Company Name
 - Address
 - Phone
 - Email
3. Building administrator data
 - Name/Company Name
 - Address
 - Phone
 - Email
4. Plant data
 - Plant Address
 - Installer
 - Installation Date
5. **Acquisition period**: sets a schedule to remind the user to manually take a readout. **The readout range selection does not automatically start a logging process.**
6. Plant Description

Once you press **OK** the plant is created and the **Plant Information** screen will be displayed to indicate that the newly created plant is open to be worked on.

4.3 Opening an existing plant

Select the **Select Plant** submenu from the **Plant** menu

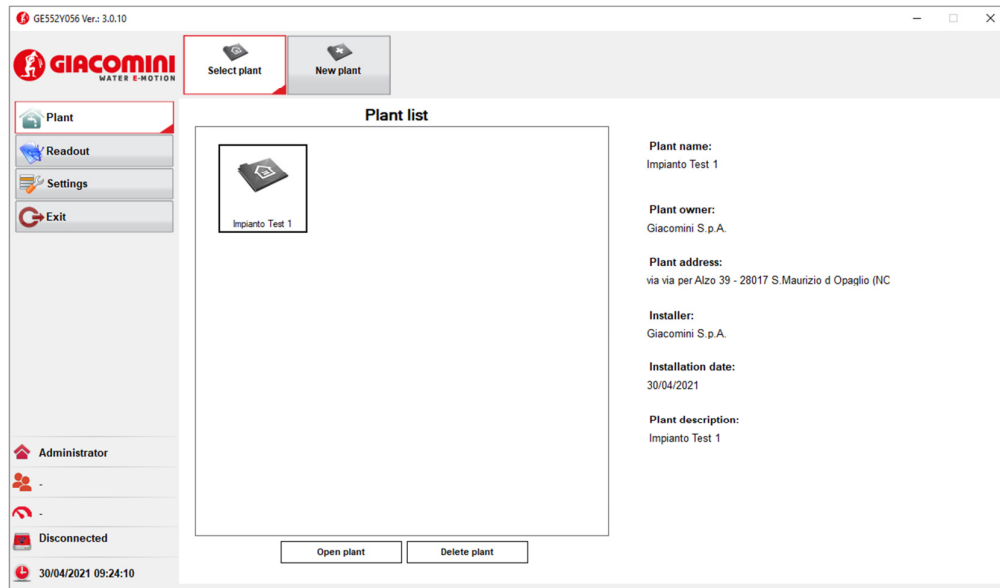


Figure 15 – Plant list - Select plant

A list of plants already saved on your PC will be shown. Select the plant you wish to open for machining by pressing the **Open plant** button. The main data of the selected plant are displayed at the side. After the plant has been opened, the **Plant Information** panel is displayed where you can consult all the information relating to the plant, such as the plant name, the number of meters and repeaters belonging to the plant, the last acquisition date and the date of the next acquisition to be carried out.

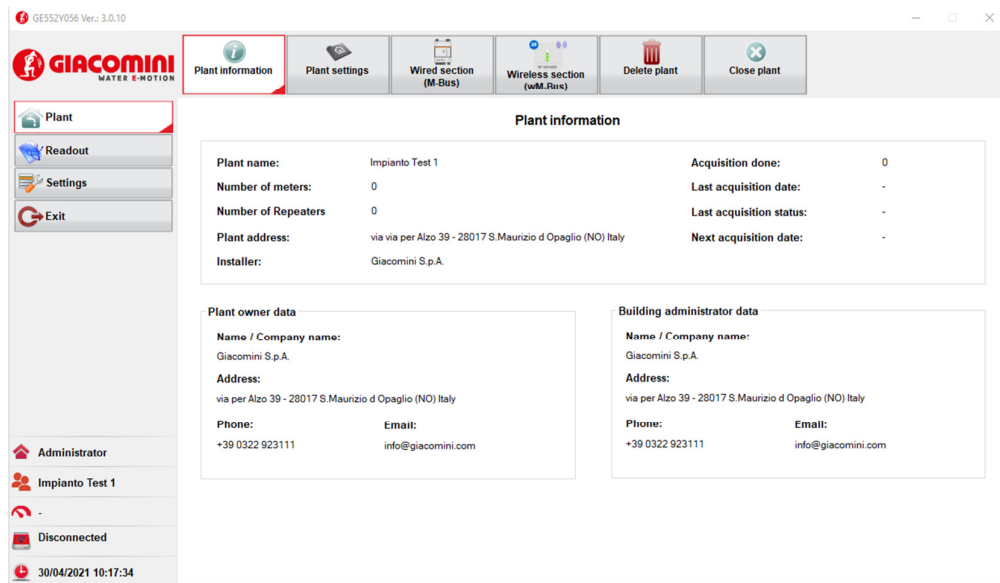


Figure 16 – Plant information Panel

Using the **Plant settings** submenu, it is possible to modify the plant data relating to the property and installer entered during the plant creation phase. The submenu for changing data is shown below.

Figure 17 – Edit plant settings

4.4 Delete plant

Select the **Delete Plant** submenu to delete the plant being worked on.

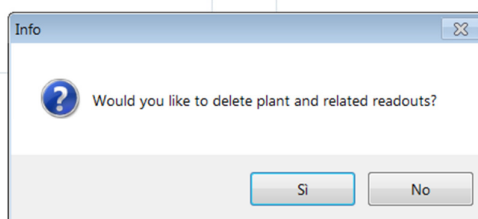
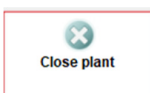


Figure 18 - Delete plant

Press **Yes** to complete the operation.

Warning, all data concerning the plant including all readout will be permanently deleted.

4.5 Close Plant



Select the **Close Plant** submenu to close the plant being worked on. Any new meters identified or readouts performed will not be saved automatically; therefore, before you close it, make sure that all the data have been correctly stored in the plant being worked on. After the system is closed, you will return to the Home Page screen (section 4.1).

5. MANAGEMENT OF M-BUS DEVICES ON WIRED SYSTEMS

5.1 GE552Y050 connection

The installation and use of the GE552Y050 level converter* does not require the installation of any driver.

Follow the steps described below:

- 1) Switch on GE552Y050 (refer to the GE552Y050 user guide)
- 2) Wait until the USB Activity LED starts blinking (8-10 seconds after switch-on)
- 3) Connect the Level Converter device with a MINI USB Type B cable to your PC

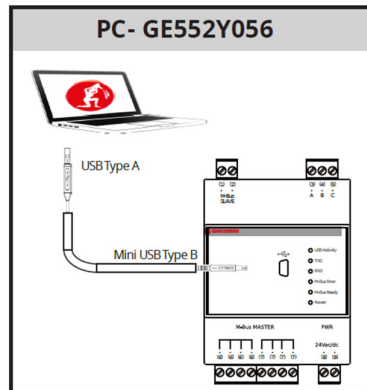


Figure 19 - Connecting the GE552Y050 unit

- 4) Wait for the correct device recognition message from the Operating System.
- 5) Reboot the operating system if prompted.

5.2 Connecting the GE552Y059

The installation and use of the GE552Y059 level converter* does not require the installation of any drivers or software.

Follow the steps described below:

- 1) Power up the GE552Y059 (refer to the GE552Y059 user guide)
- 2) Wait for the LED Run to light up solidly (after 8-10 seconds from power on)
- 3) Connect the Level Converter device with the SIN.EQUSB232 cable to your PC

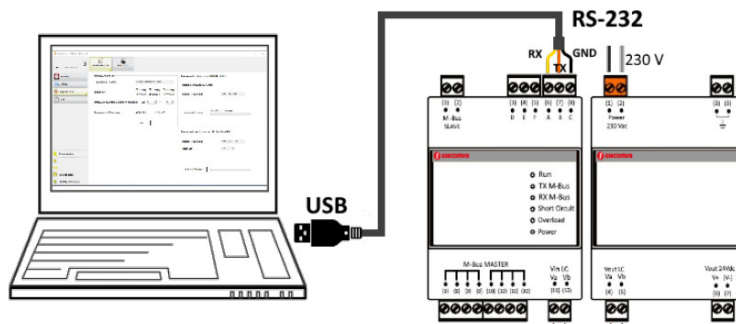


Figure 20 - GE552Y059 Device connection

- 4) Wait for the message from the Operating System of correct recognition of the device.
- 5) If required by the operating system, restart the system.

If a no device recognition message appears on the PC screen, use the link <http://www.ftdichip.com/Drivers/VCP.htm> to open the site where you can download the driver required to recognise the GE552Y053 device.

The following illustration shows how to select the right driver based on the operating system installed on your PC and its architecture.

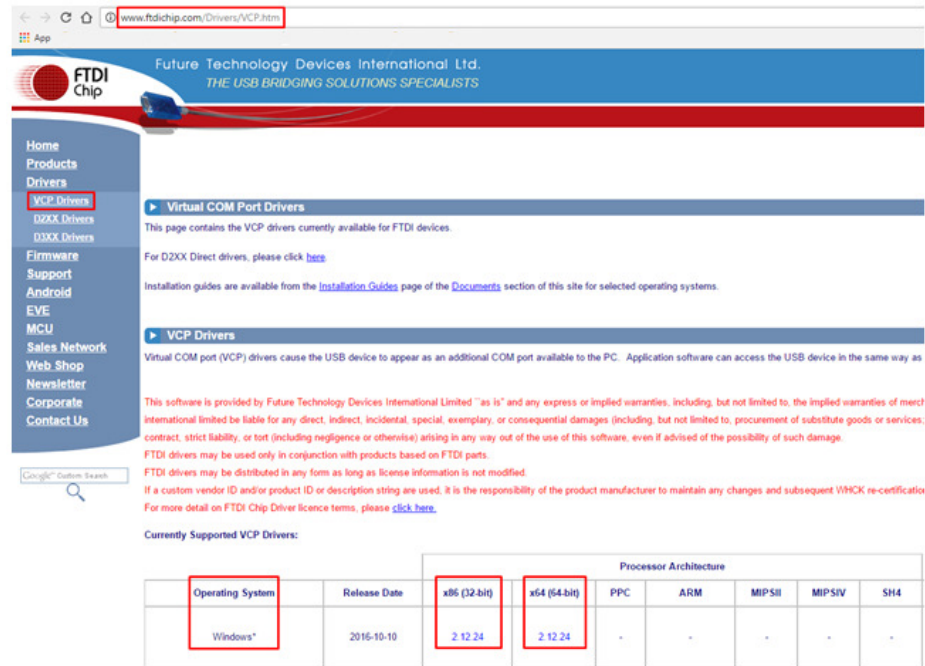


Figure 21– Driver download driver for the GE552Y053 unit

* The LC acronym may also be used below

5.3 M-Bus Interface settings and GE552Y050 and GE552Y059 firmware upgrade

In this section you can configure general LC characters such as connection type (USB or serial interface), search type, baud rate, scan interval. In addition, if necessary, you can update the firmware.

To access the section click on  and then on  where you can access the following menus:

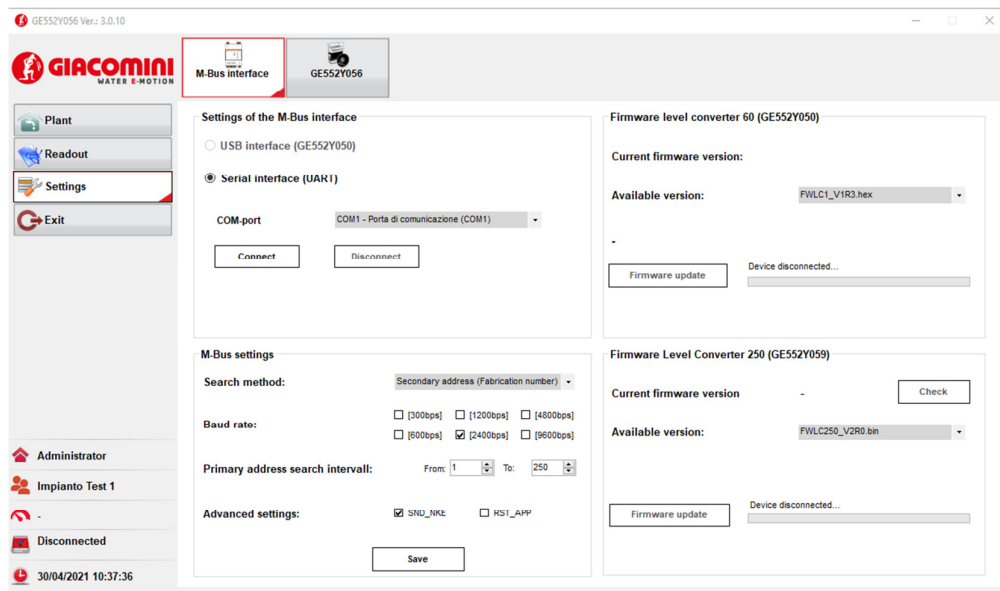


Figure 22 - M-Bus Interface

- **M-Bus interface settings**

- **USB Interface (GE552Y050):** to operate with the Sinapsi GE552Y050 level converter via USB/mini USB cable, simply connect the device to the PC via the mini USB port and power it up. This option will be activated autonomously when the level converter is connected.
- **Serial Interface (UART):** Serial Interface (UART): this option can be selected when there is at least one available COM port on the PC. With this interface it is possible to establish a connection both with the GE552Y050 level converter and with the GE552Y059 level converter by connecting to their RS232 bus connector (ABC port) using the SIN.EQUSB232 cable. Alternatively, it is possible to use an RS232 cable respecting the following connection: A (LC) → RX (PC), B (LC) → TX(PC), C (LC) → GND(PC).
- **COM port:** In the drop-down menu all the COM ports active in the PC will be displayed.

Press **Connect** to connect to the LC using the serial interface.

WARNING: If there are several serial (COM) interfaces in the computer, you must make sure which COM port the level converter is connected to. Connect the SIN.EQUSB232 cable to check which COM port it is associated with.

- **M-Bus Settings**

- **Search method:** You can select the type of meter search. Refer to your meter datasheet and LC user guide
 - Primary Address (ID): Search by address
 - Secondary Address (Fabrication number)
 - Primary and Secondary Address: Search by address and fabrication number
- **Baud rate:** by default the value is 2400bps. For changes, refer to the meter datasheet and the LC user guide
- **Primary Address search interval:** Define a search range for ID. The value can range from a minimum of 1 to a maximum of 250
- **Advanced settings:**
 - RST_APP: before starting the meters search, sends the command M-Bus Reset Application (to be used only if expressly requested by the meter (s))
 - SND_NKE: sends the M-Bus command to initialize the Slave before reading.

Press **Save** to store settings

- **Firmware Level Converter 60 (GE552Y050)**
 - **Available version:** search for available revisions on your PC
 - Firmware update:** press the button to update the GE552Y050 device.
- **Firmware Level Converter 250 (GE552Y059)**
 - **Available version:** search for available revisions on your PC.
 - Firmware update:** press the button to update the GE552Y059 device. This button is only available when connecting to a COM port.
 - Follow the instructions of the software (Figure 23 A): it is necessary to remove and then re-power the GE552Y059. After 2 seconds from the power supply, while the **Run** LED is flashing, press the "PROG" key in the device and keep it pressed until the updating process starts (Figure 23 B). After the update has been successful (Figure 23 C) the level converter will be ready for use.



Figure 23 (A) - Update indications

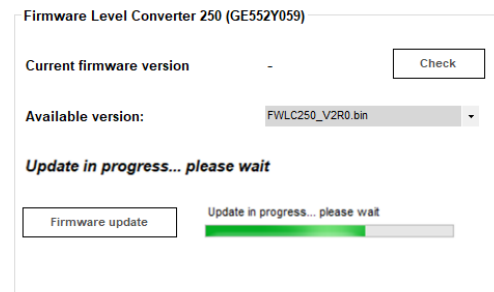


Figure 23 (B) - Firmware update in progress

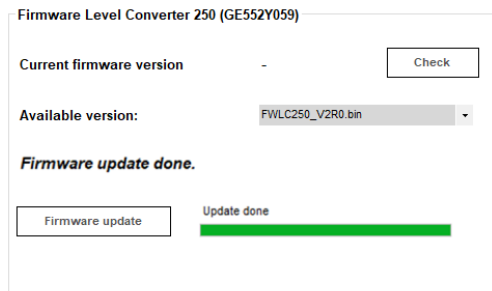


Figure 23 (C) - Successful firmware update

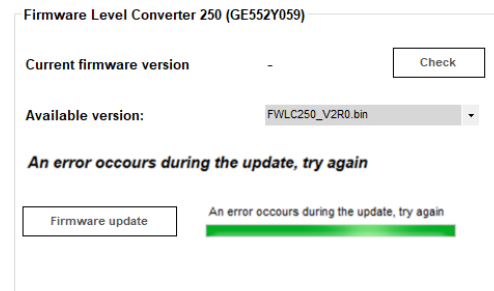



Figure 23 (D) - Update error

After the **Firmware Update** button has been pressed, the software waits for up to **60 seconds** for the operations indicated to be performed. If after this time it does not detect anything, it closes the update process by reporting an error during the update procedure (Figure 23 D) and returns to the normal state waiting for any actions.

5.4 Wired section (M-Bus)

Click  to open the wired M-Bus plant submenu.

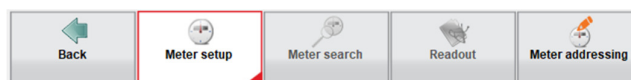


Figure 24 - Wired Section (M-Bus) Submenu

5.5 Meter search

Once connected to your PC, using the USB/Micro USB cable with the GE552Y050 device (Level Converter) or the SIN.EQUSB232 cable to the ABC serial port of the GE552Y050 or GE552Y059, you can search for meters on the M-Bus chain. This operation is performed every time one or more meters have to be inserted in the system. Select **Meter search** from the submenu panel and press the “start” button.

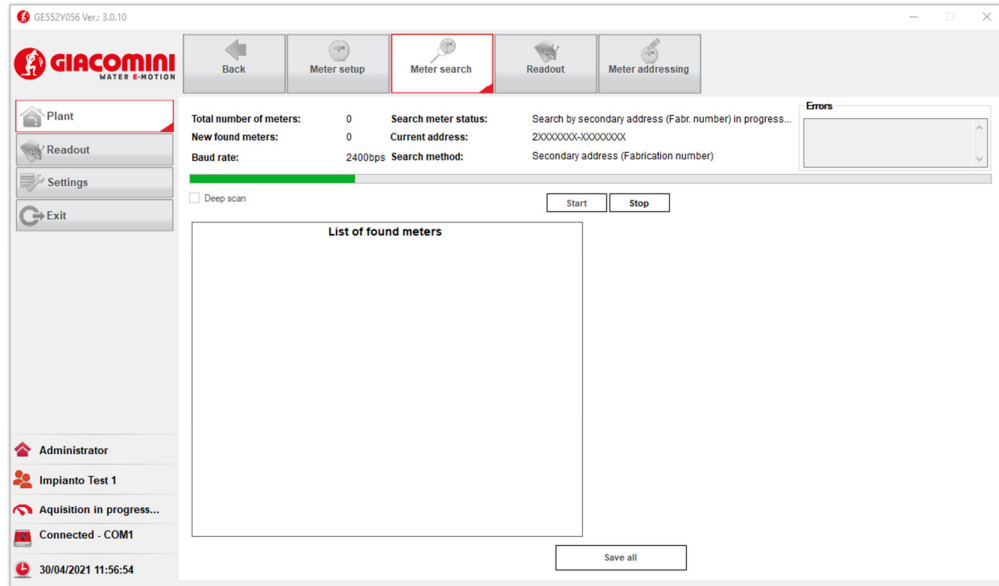


Figure 25 – Meter search

The search mode is performed according to the settings saved in **Settings → M-Bus Settings**. By default, the software performs a first search by primary address (Meter ID) in the range from 1 to 250, then completes the search by secondary address (Meter Fabrication number). The default communication speed is 2400bps. During the search, the status bar shows the status of activity on the bus and the progress of the search. If the search is done, by default, by primary address and then by secondary address, the search progress in the status bar is shown separately. That is, first the progress for primary, then it is reset and indicates the progress for secondary.

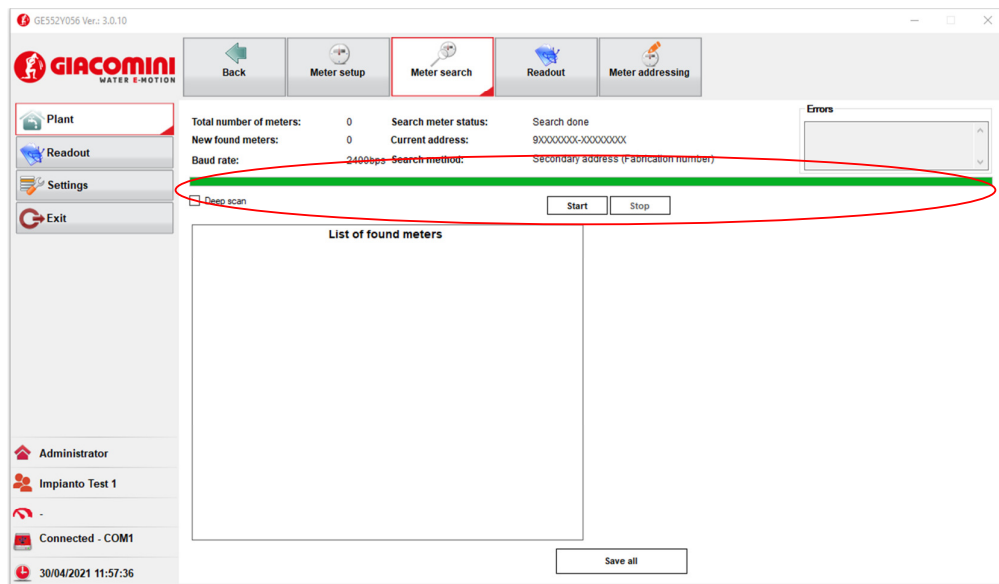


Figure 26 – Meter search

The items that indicate the progress of the search are:

- **Total number of meters:** indicates the overall number of meters found during the search.
- **New found meters:** indicates the number of new meters found during the search.
- **Baud rate:** indicates the speed with which the level converter queries the meters in the M-Bus chain. The default communication speed is 2400bps and can be changed from the Settings menu. Check the meter datasheet to verify the communication speed in the event that there is no response.
- **Search meter status:** indicate the status of the search
- **Current address:** indicates the serial number or the primary address that the level converter is searching at that time. In the event of a search by serial number (secondary address), the wildcard logic is used to detect all the possible meters in a comprehensive manner.
- **Search method:** indicates whether the search is carried out by primary address or by secondary address (serial number).

Search by secondary address is based on the detection of any collision on the bus following the query of a set of serial numbers, such as 06XXXXXX. There is a remote possibility that some meters cannot be detected during this search. In such an event, we recommend allocating a primary address from 1 to 250 to the undetected meter and repeat the ID scan of the bus.

The meter search will be completed when all possible serial number are questioned. The Meters Found list box will gradually show the meters that have responded correctly to the level converter request.

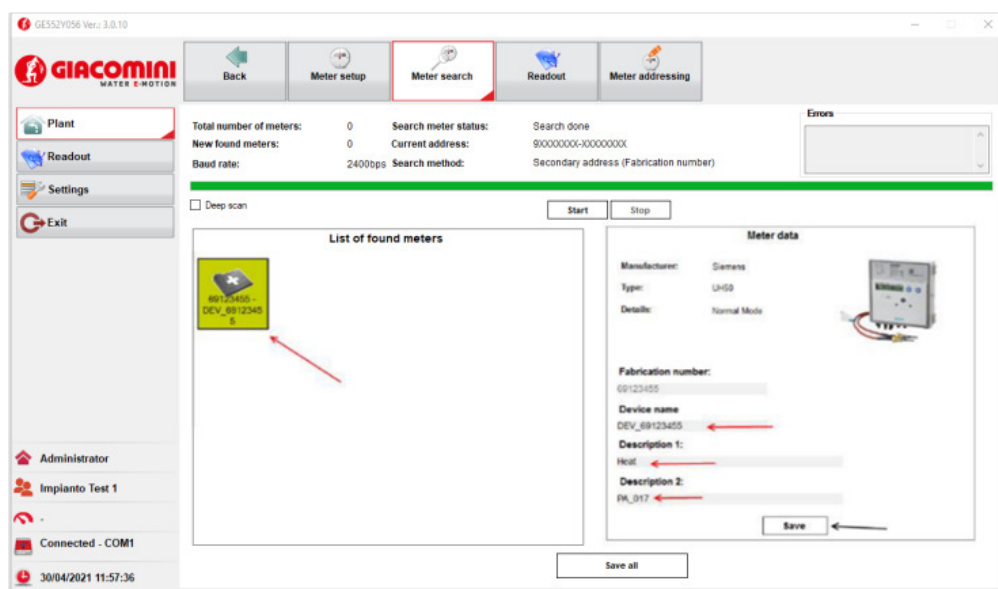


Figure 27 - Saving meters

Based on the M-Bus protocol, all the devices in the chain will respond to the call of the level converter. The meters in the database recognised by the LC will have their models graphically displayed.

If a meter found in the M-Bus chain does not display the image of its model, it will still be managed normally; however, additional settings may be required for data provided by the meter (see Meter Setup).


Every meter found in the M-Bus chain must be named:

- *Device Name:* enter the identification name of the device. This field will be shown in the Report section
- *Description 1:* add a first description to identify the meter. This field will be shown in the Report section
- *Description 2:* add a second description to identify the meter.


Press **SAVE** for each meter found to confirm its addition to the plant being worked on. Once saved, the meter icon will change its status as described below.

The devices in the M-Bus chain can be queried several times in the event that a device in the chain does not answer the call. The **List of Found Meters** will show all the meters in the M-Bus chain, both the new ones and the ones previously saved.

There is a visual distinction as shown below

- 

66660211 - Mario Rossi

 device already saved and added to the plant being worked on
- 

66336640 - Device Name

 new device to be saved and added to the plant being worked on

To save the new meters, follow the steps described above.

5.6 Meter addressing

It is possible to read, assign and modify the primary addresses of the connected M-Bus devices. The saved primary addresses of the wired meters of the system are displayed.

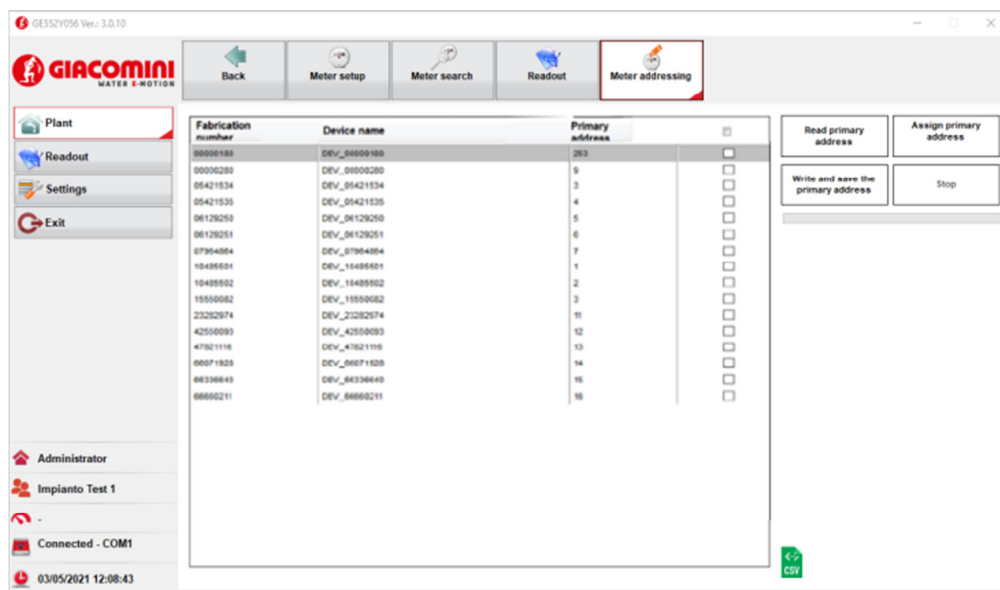


Figure 28 – Primary addressing

You can sort the devices in the table in ascending or descending order by clicking in the column header:

- Fabrication number
- Device name
- Primary address

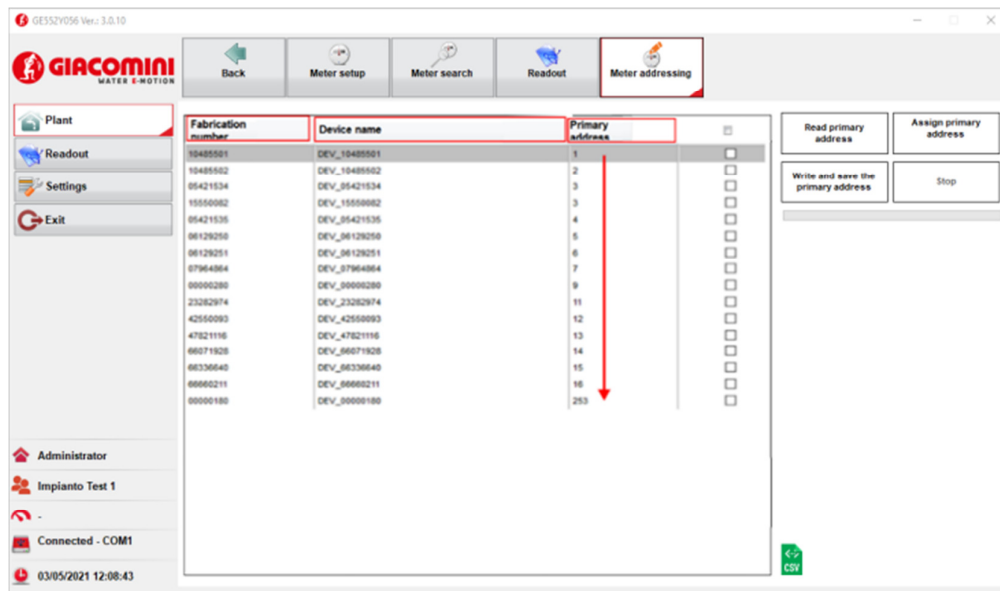


Figure 29 – Sorting devices



In addition, by clicking on the icon at the bottom right, next to the table you can download a list of devices in the table in CSV format, with field separator ";".

Fabrication number	Device Name	Primary address
180	DEV_00000180	253
280	DEV_00000280	9
5421534	DEV_05421534	3
5421535	DEV_05421535	4

Figure 30 – Download list example

The buttons with which you can perform operations are:

- **Assigns automatically:** assigns a primary address to the devices in the list in the list automatically and in ascending order.
- **Read primary address:** reads the primary addresses of all devices connected to the level converter.

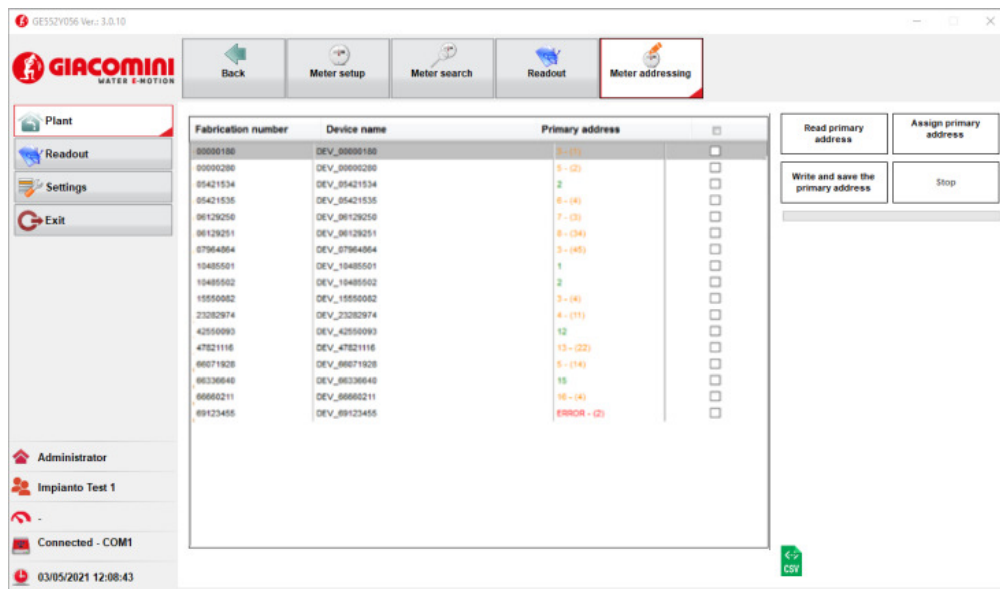


Figure 31 – Read primary address

When reading the primary addresses, the software using the level converter requests this data from the plant's meters. From the meter response:

- If the primary address of the meter is **different** from the one saved previously (perhaps because it was set up with third-party software), then it is displayed in **orange** and the address previously saved is indicated in brackets.
- If the primary address from the reading is **identical** to the one saved, it is displayed in **green**.
- If the meter is **disconnected or does not respond to internal anomalies**, then the message ERROR is displayed in **red** and in parentheses any value that has already been saved.

- **Write and save primary address:** writes the selected primary addresses to the selected devices. When writing the primary address, you will see the number of the selected device turn orange during the writing phase and then green when writing successfully.

Primary address	<input type="checkbox"/>
2	<input checked="" type="checkbox"/>

Primary address	<input type="checkbox"/>
2	<input checked="" type="checkbox"/>

Attention, there are M-Bus devices to which it is not possible to change the primary address assigned in this case the corresponding field will be displayed in red.

Fabrication number	Device name	Primary address	<input type="checkbox"/>
10485501	DEV_10485501	1	<input checked="" type="checkbox"/>
10485502	DEV_10485502	2	<input checked="" type="checkbox"/>

Figure 32 – M-Bus devices with non-programmable primary address

5.7 Meter Setup

You can change the settings of every previously saved meter by accessing the **Meter Setup** submenu.

Fabrication number	Device name	Description	Delete All
00000180	DEV_00000180	Acqua	
00000280	DEV_00000280	Acqua calda	
05421534	DEV_05421534	Elettrica	
05421535	DEV_05421535	Elettrica	
06129250	DEV_06129250	Acqua	
06129251	DEV_06129251	Acqua calda	

Meter setup

Fabrication number: 00000180 Manufacturer code: LSE
Device name: DEV_00000180 Version: B4
Description 1: Acqua Physical medium: Water
Description 2: PA_008 Baud rate: 2400 bps
Installation date: 02/12/2019 Primary address: 253
Readout by: Primary Address

Manufacturer: Siemens
Type: WFM542
Details: Water Aux

Meter data

User description	M-Bus description	Main values
Volume totale	Volume	<input checked="" type="checkbox"/>
Data ora dispositivo	Time Point	<input type="checkbox"/>
Conta ore funzionamento	On Time	<input type="checkbox"/>
Data errore	Time Point	<input type="checkbox"/>
Numero identificativo	Fabrication Number	<input type="checkbox"/>
Identificativo cliente	Customer Location	<input type="checkbox"/>

Subunit: 0
Storage: 0
Tariff: 0
Type Value: Instantaneous
Multiplier: 0.001
Units: m3
REP_ID: 8

Save

Figure 33 - Meter setup

You can delete any meter added to the plant being worked on by pressing **X**.
Warning, all meter data will be permanently deleted.

Fabrication number	Device name	Description	Delete All
69123455	DEV_69123455	Heat	

Figure 34 - View meters

1. Meter setup

- **Fabrication number:** indicates the serial number of the selected meter
- **Device Name:** indicates the name of the device
- **Description 1:** add a first description to identify the meter
- **Description 2:** add a second description to identify the meter
- **Installation date:** indicates the meter installation date. This is set automatically upon saving the meter as described in the previous chapter.
- **Manufacturer Code:** indicates the manufacturer code
- **Version:** indicates the version of the meter.
- **Physical medium:** indicates the type of value read by the meter
- **Baud rate:** Indicates the speed with which the meter communicates with the level converter. Check the meter manual to verify the communication speed.
- **Primary Address:** shows the primary address of the meter.
Note: this setting does not change the meter address. To change the meter address refer to the previous paragraph (5.6).
- **Addressing:** select whether to read by primary or secondary address
- **Manufacturer:** indicates the manufacturer's name in the event that the meter in the database is identified by the level converter.
- **Type:** indicates the meter model in the event that the meter in the database is identified by the level converter.
- **Details:** specifies different configurations for the same meter model.

2. Meter Data

You can select the values to be displayed in the **Readout** menu. Below is an example regarding a list of the values that can be selected for a meter. The table shows all the data originated from a meter query. In the event that the meter is in the database of the level converter, the data in the "User Description" column will be filled out automatically; otherwise, the user will have to give a name to the "User Description" fields, which, by default, are the same as the **M-Bus Description** field. The same applies to the "Display Data" column. In this case, if the meter is in the LC database, the data will be preset and can always be changed by the user; otherwise, if the meter is not recognised, they will be selected directly by the user.

User description	M-Bus description	Main values
Flow measure interval	Actually Duration	<input type="checkbox"/>
Flow measure interval	Averaging Duration	<input type="checkbox"/>
Total energy consumption	Energy	<input checked="" type="checkbox"/>
Total volume	Volume	<input checked="" type="checkbox"/>
Inst. power	Power	<input checked="" type="checkbox"/>
Flowrate	Volume Flow	<input checked="" type="checkbox"/>
Flow temperature	Flow Temperature	<input checked="" type="checkbox"/>

Figure 35 - Selectable Values

5.8 Readout

Access the **Readout** section to acquire the measurements

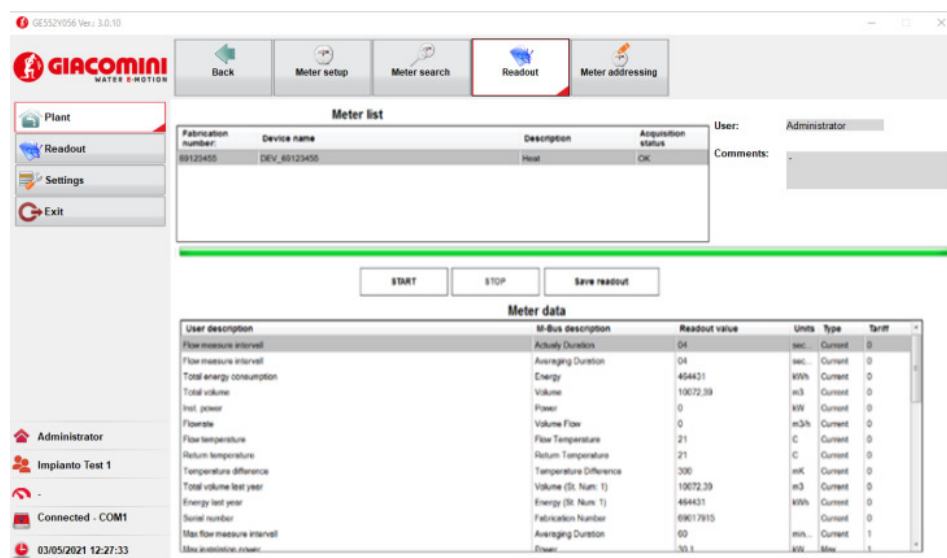


Figure 36 - Readout

Press the **Start** key to start reading the data of each meter in the list. If the level converter is correctly connected (in case of connection with the serial interface, the COM must be the one to which the device is actually connected) and a meter reading has been successful, an OK is present on the Reading Status otherwise, in case of an error, the ERROR message will appear. The data read from the meter and tabulated in the Meter Data section can be sorted by all the columns present, such as

- User description
- M-Bus description
- Readout value
- Units
- Type
- Tariff

When all meters are correctly read, save the reading to save it in the plant being worked on.

6. READOUT SECTION

6.1 Open Readout

To open an existing readout to view consumption data or generate a report, select **Open readout** from the main menu. The list of all the readouts that have been saved will be displayed.

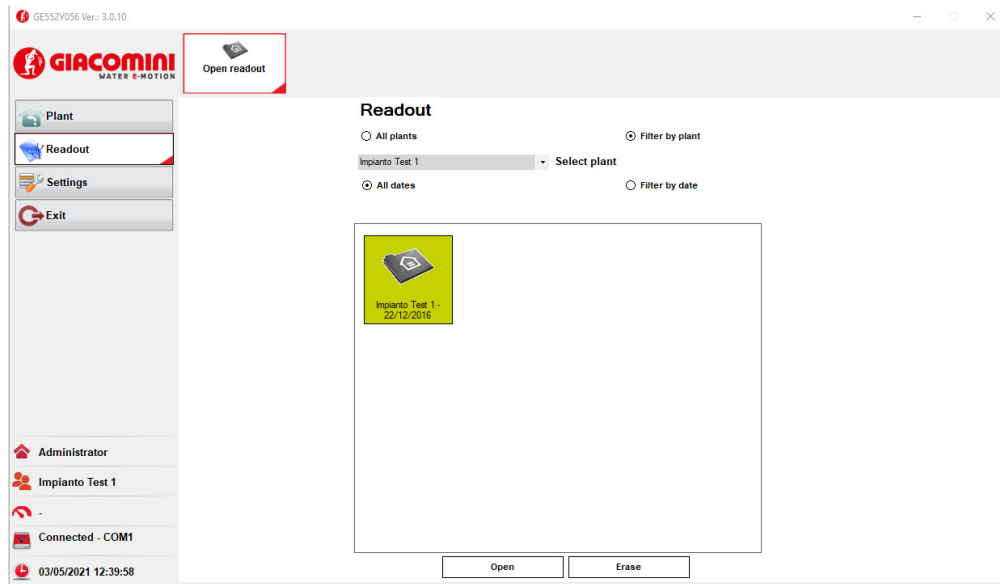


Figure 37 - Readout

Select the filter to display the plants among:

- **All plants:** shows the readouts of all the plants that have been created.
- **Filter by plant:** shows only the readouts pertaining to the selected plant.
- **All dates:** does not filter by date
- **Filter by date:** shows the readouts performed in the interval between the selected dates.

Select the list you want to open from the readout list and press **Open**.

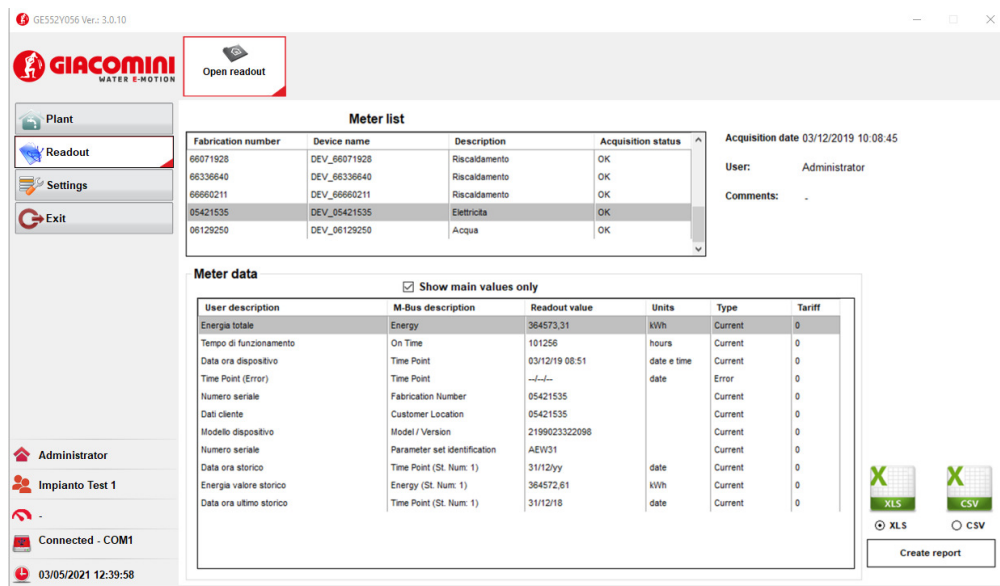


Figure 38 - Plant Readouts

The screen is divided into four parts:

- **Meter List:** shows the list of meters of the plant at the time of the readout
 - **Fabrication number:** indicates the serial number of the selected meter
 - **Device name:** shows the name of the meter
 - **Description:** shows the description if previously added
 - **Acquisition status:** shows the status for the selected meter
- **Acquisition Date:** shows the date when the readout was performed
- **User:** shows the name of the user performing the readout
- **Comments:** shows notes, if any
- **Meter Data:** shows the values selected in the **Meter Setup** section

Show main values only: this item is active by default. It shows only the standard fields set in the meter based on what was described in chapter Meter Setup (5.7).

Show main values only: when deactivated, it shows all the fields read by the meter

- **XLS:** sets the export in .xls format
- **CSV:** sets the export in .csv format

Press **Create Report** to generate a report according to the settings selected as described above. Select a name and a path to save it on your PC.

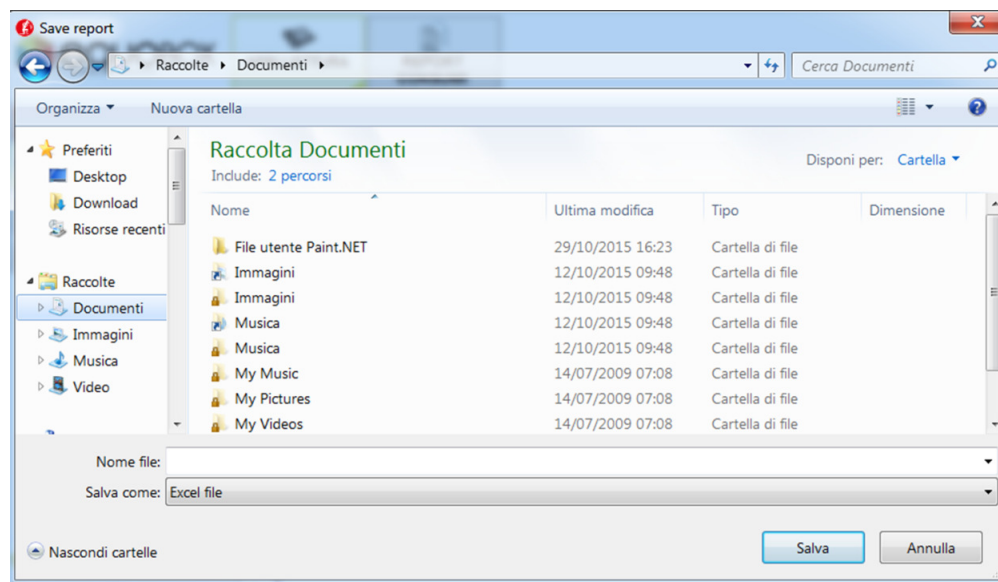


Figure 39 - Defining the saving path

6.2 Excel Report

Below is an example of a report in Excel format generated for a plant with two meters.

prova - Microsoft Excel										
<div>Home Inserto Layout di pagina Formule Dati Revisione Visualizza Strumenti</div> <div>Calibri 10 A [font icons] [text style icons] Generale [table icons] Normale Neutrale Valore non valido [table icons] Somma automatica [table icons] [table icons</div>										

Figure 40 – Report Example

Both the xls and csv format report is organised with:

- **Header:** which shows the name of the operator who has performed the readout, the name of the plant of the readout, its address, and the date and time of the readout.
- **Meter data:** This section shows the data pertaining to the meters of the plant at the time of the readout. It consists of a line that shows the fabrication number and the three descriptions associated to the meter. The next line shows the heading of the data of that particular meter, whose readout date is shown in the first column and readout time in the second column. The next columns show the heading of the meter fields included in the report indicated with the M-Bus description, User Description, and unit of measure. By default, the report only includes the fields marked with **Data Display** in **Meter Setup** unless the **Display only the main fields** setting is unticked before generating the report.

NB: data extrapolated from the system require

- **the use of a period to separate thousands**
- **and a comma to separate tenths**

7. GE552Y053 DEVICE MANAGEMENT ON WIRELESS PLANT

To access the **Radio Section** you must first create and open a system.

7.1 Connecting a GE552Y053 repeater

Connect the GE552Y053 (W. M-Bus Repeater) device with a MINI USB Type B cable to your PC

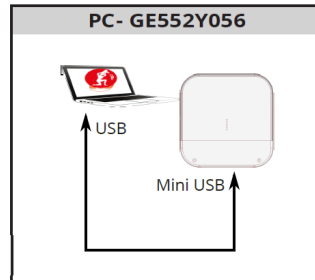


Figure 41 - Connecting the GE552Y053 unit

If a no device recognition message appears on the PC screen, use the link <http://www.ftdichip.com/Drivers/VCP.htm> to open the site where you can download the driver required to recognise the GE552Y053 device.

The following illustration shows how to select the right driver based on the operating system installed on your PC and its architecture.


The screenshot shows the FTDI Chip website's 'VCP Drivers' section. The 'Operating System' dropdown is set to 'Windows*' and the 'Processor Architecture' dropdown is set to 'x86 (32-bit)'. The table below lists the currently supported VCP drivers.

Operating System	Release Date	Processor Architecture						
		x86 (32-bit)	x64 (64-bit)	PPC	ARM	MIPSII	MIPSIV	SH4
Windows*	2016-10-10	2.12.24	2.12.24	-	-	-	-	-

Figure 42 - Driver download driver for the GE552Y053 unit

7.2 Wireless Section (W. M-Bus)



Click  to open the W. M-Bus Repeaters plant submenu.

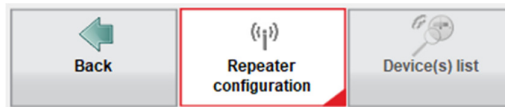


Figure 43 – Radio Section Submenu (W.M-Bus)

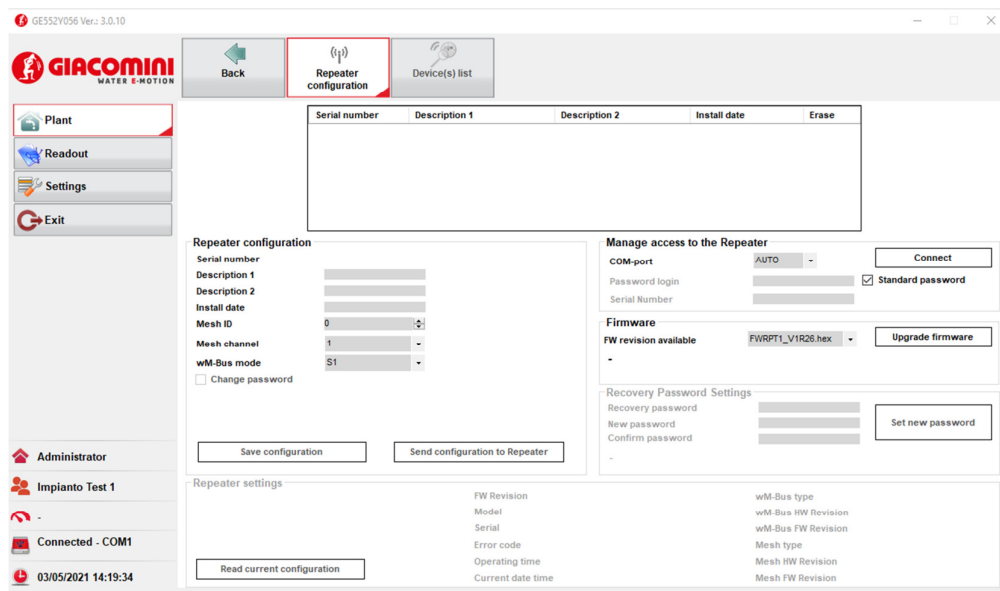


Figure 44 – W. M-Bus Repeater Setup

7.3 GE552Y053 Repeater Firmware Update

We recommend you always check for a Repeater firmware version release later than the one installed on the devices during production.

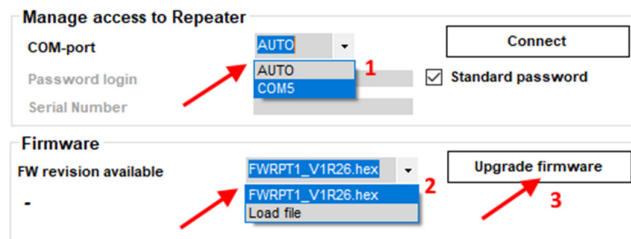


Figure 45 - GE552Y053 unit firmware update

1. select the COM port connected to the Repeater
2. select the **FW revision available** from those in the list (normally the most recent version is the first one in the list); you can also upload (**Upload File**) additional firmware versions from the PC memory
3. click **Upgrade Firmware** to launch the update procedure; the **Press and release the Reset button on the device and wait message appears**



Figure 46 - GE552Y053 firmware update indications

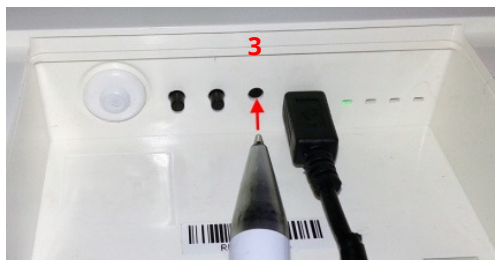


Figure 47 - press reset button

4. next, the **Press and release the Reset device button to complete the update** message appears

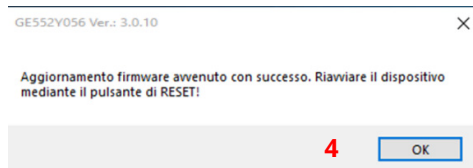


Figure 48 - Firmware updated and reset required

7.4 Access to the Repeater

In the **Manage access to Repeater** section there are the following fields:

- **COM Port:** All the real or virtual serial ports of the PC are present.
- **Password login:** set the password if the Repeater to which you connect has a different password from the default one (standard password)
- **Serial Number:** field automatically filled in at the Repeater connection
- **Standard password:** tick to apply the standard login password

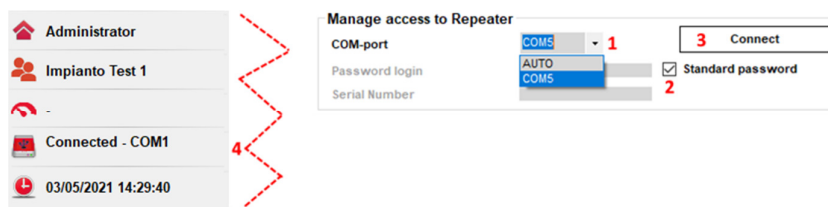


Figure 49 - Connecting the GE552Y053 unit

1. if known, select the COM port connected to the repeater, otherwise select **AUTO**
2. leave the **Standard password** ticked (or if a password other than the standard was previously set on the repeater, untick and enter the password in **Login password**)

Manage access to Repeater

COM-port: COM5 1

Password login: ***** 2 ☐ Standard password

Serial Number: 3 **Connect**

Figure 50 – Connect to Repeater with new password

3. click **Connect** to connect the repeater
4. check for the connection established message

NOTE: By pressing the **Disconnect** button, the Repeater is first restarted. During this phase it is recommended to wait a few seconds before disconnecting the power supply.

NOTE: Disconnecting the USB cable from the PC without pressing the **Disconnect** button, the software recognizes the disconnection of the device by updating its status.

7.5 Change Repeater Login Password

To protect repeaters against undesired login, their login passwords can be changed (from the factory default) in **Repeater configuration**. Establish a connection with the repeater connected to the PC, see paragraph 7.1.

Repeater configuration

Serial number: RP16507381

Description 1: DEV_RP16507381

Description 2:

Install date: 30/1/2020

Mesh ID: 1

Mesh channel: 13

wM-Bus mode: C1T1T2

☒ **Change password** 1

New password: ***** 2

Confirm Password: ***** 2

Save configuration 3 **Send configuration to Repeater** 4

Figure 51 – Change Repeater Password

1. check for the tick in the **Change password** box
2. set the new password in **New Password** (use maximum 15 numbers and/or upper or lower case letters) and re-enter it on **Confirm Password**
3. click **Save configuration** to save the new password in the Database
4. click **Send configuration to Repeater** to write the new password in the repeater memory

Then, to connect, simply log in as indicated in paragraph 7.4:

1. if known, select the COM port connected to the repeater, or select **Auto**
2. untick the **Standard password** box
3. set the (new) repeater password
4. click **Connect** to connect the Repeater
5. check for the connection established message

If you forget the new password and cannot connect to the repeater,

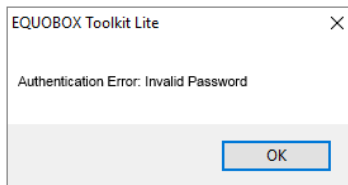


Figure 52 – Authentication failed

To allow access to the Repeater again, a new password must be set using the recovery password that must be requested from Sinapsi customer service.

Figure 53 – Using the Recovery Password

1. enter the Recovery Password you received from Sinapsi in the **Recovery Password** field
2. enter a new password of your choice for the repeater in the **New Password** field
3. repeat the same new password in the **Confirm password** field
4. click **Set new password** to set the new password in the repeater memory and to connect to the repeater

The following message indicates that the operation was successfully completed.

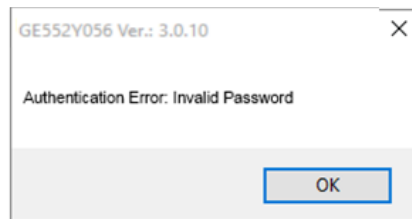


Figure 54 – Reset Password

7.6 Setting a Mesh Network Address (on RTU) and on Repeaters

To avoid interference between several adjacent systems, assign a different **Mesh Network ID** to the GE552Y052 or GE552Y058 of each system.

The setting is made on the GE552Y052 or GE552Y058 through its web interface: Settings/Wireless Devices/Wireless Setup/Mesh Network Setup.

Figure 55 – Change Mesh network address on GE552Y052 device

The same **Mesh Network ID** should also be set on all Repeaters in the network for the RTU1T they communicate with.

Establish a connection with the repeater connected to the PC

Set the Mesh network address of your choice

Repeater configuration

Serial number	RP16507357
Description 1	DEV_RP16507357
Description 2	
Install date	25/11/2019
Mesh ID	3
Mesh channel	13
wM-Bus mode	T1

☐ Change password

2 Save configuration **3** Send configuration to Repeater

Figure 56 – New settings on GE552Y053 unit

1. select the **Mesh ID** (0÷255 – factory settings = 1)
Note 1: we recommend you do not change the Channel Mesh (13) since changing it may also change the repeater transmission power.
2. Click **Save configuration** to save the repeater settings in the software Database (GE552Y056)
Note 2: the following message will be displayed (click OK)

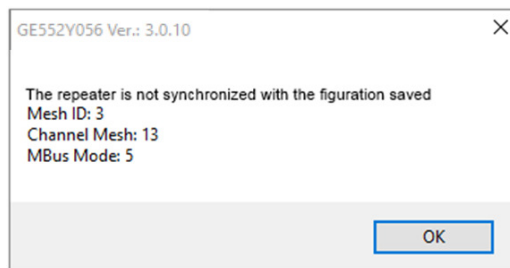


Figure 57 – Repeater NOT synchronized with the saved configuration

3. click **Send configuration to Repeater** to write the new settings in the repeater memory.
4. click **Read current configuration** to check whether written on the repeater
Note: the following message will be displayed (click OK)

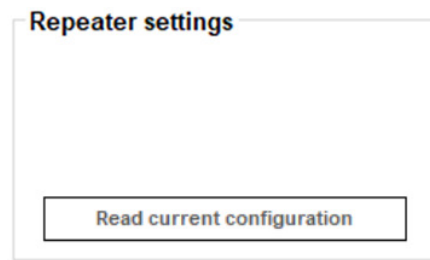


Figure 58 (A) – Repeater configuration reading

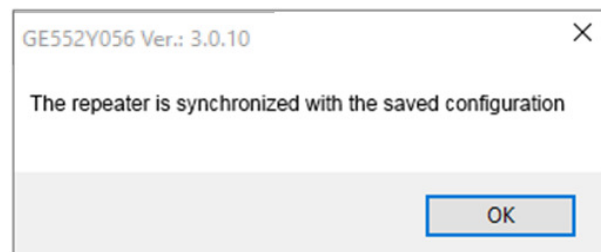


Figure 58 (B) – Synchronized Repeater with the saved configuration

The following fields are also included in the **Repeater Configuration** to edit other settings on the repeater

- **Serial number:** repeater serial number (unmodifiable)
- **Description 1:** lets you add the first repeater description
- **Description 2:** lets you add the second repeater description
- **Installation date:** lets you set the repeater installation date.

- **Change Password:** tick to change the repeater default password
- **New Password:** lets you enter a new login password for the repeater (can only be changed if the **Change Password** box is ticked)
- **W. M-Bus Mode:** if the devices that have to communicate with the repeater use a mode other than the factory set mode (C1+T1+T2), change (S1, S1+S2, T1, T1+T2, T1+S1) the repeater W. M-Bus mode

Note: if the repeater is in a Mesh network under a RTU1T or RTUEVO1T, these settings should only be made on the RTU that automatically transmits them to all repeaters in the same Mesh network.

Figure 59 – Wireless mode change on GE552Y052 device

7.7 Uploading a list of available W. M-Bus devices in the plant on repeaters

Note: the list can only be uploaded on repeaters with firmware version **FWRPT1_V1R20.hex** or later; the list causes operating faults on devices with earlier firmware versions.

Still referring to the installation, represented in Figure 50, the various Repeaters receive the W. M-Bus signal from devices in its plant but can also receive the signal from devices in adjacent plants.

If one or more Repeaters receive the signal from more than 500 devices (Max 500 for each Repeater), those over the number 500 are ignored and could, actually, belong to the plant to be monitored.

In this case, a file with a list of devices that belong to the relevant plant must be uploaded to the Repeater (Maximum 500); after uploading the file, signals from devices not included in the list are ignored by the Repeater. The file, which must be called **list.rpt**, must be a **CSV** file with a format like that indicated in next Figure

```

File Modifica Formato Visualizza ?
Id;Serial Device;Note;Address;Internal;Surname;Name;City;AES Key
;;;;;;;;
1;16255119;MAD radioEVO;Via Giuseppe Garibaldi 7/A;Appartamento 1;Rossi;Mario;Bastia Umbra;
2;31001341;EFE FAW (AES Key error);Via Giuseppe Garibaldi 7/A;Appartamento 1;Rossi;Mario;Bastia Umbra;
4;70453441;MAD SensoStar E;Via Giuseppe Garibaldi 7/A;Appartamento 2;Bianchi;Tiziano;Bastia Umbra;
5;34584901;MAD(EFE) microCLIMA;Via Giuseppe Garibaldi 7/A;Appartamento 2;Bianchi;Tiziano;Bastia Umbra;

```

Figure 60 – list.rpt file format

Establish a connection with the repeater connected to the PC, see paragraph 7.1, Figure 41.

Click on the **Meter List** submenu item to open the screen with the following four “buttons”

Meter list				
Id	Serial number	Surname	Name	Notes

Figure 61 – Meter list management screen

Click the **Import list file** "button" to select a file to be imported from the PC memory; the imported list is displayed in the **Send Meter List to repeater** window.

Import list file	Send meter list to Repeater	Read meter list from Repeater	Erase list from Repeater
------------------	-----------------------------	-------------------------------	--------------------------

Meter list				
Id	Serial number	Surname	Name	Notes
1	16255119	Rossi	Mario	MAD radioEVO
10	00000878	Purple	John	SIN.EQPR02X(WEP)
11	00004187	Verdi	Giuseppe	SIN.EQPR01X (WEP)(AES Key error)
12	00500006	Verdi	Giuseppe	SIN.EQPR11X (LAS)(AES Key)

Figure 62 – Plant Meter List

When the operation is finished the following messages are shown:

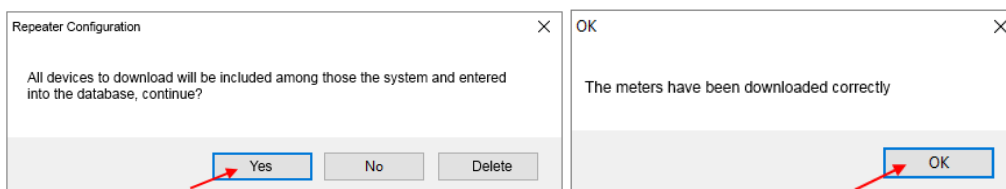


Figure 63 – Request for confirmation of upload of list and completed operation message

The following fields are also included in the **Manage meter list** section

- **Read meter list from repeater:** click to read the file with the list of devices from the repeater memory

Import list file	Send meter list to Repeater	Read meter list from Repeater	Erase list from Repeater
------------------	-----------------------------	-------------------------------	--------------------------

Meter list				
Id	Serial number	Surname	Name	Notes
1	16255119	Rossi	Mario	MAD radioEVO
10	00000878	Purple	John	SIN.EQPR02X(WEP)
11	00004187	Verdi	Giuseppe	SIN.EQPR01X (WEP)(AES Key error)
12	00500006	Verdi	Giuseppe	SIN.EQPR11X (LAS)(AES Key)
13	35026217	Verdi	Giuseppe	SIE(QDS) WFZ661

Figure 64 – Reading present list of the repeater

- **Erase list from Repeater:** click to delete the file with the list of devices from the repeater memory.

Import list file	Send meter list to Repeater	Read meter list from Repeater	Erase list from Repeater
------------------	-----------------------------	-------------------------------	--------------------------

Meter list				
Id	Serial number	Surname	Name	Notes
1	16255119	Rossi	Mario	MAD radioEVO
10	00000878	Purple	John	SIN.EQPR02X(WEP)
11	00004187	Verdi	Giuseppe	SIN.EQPR01X (WEP)(AES Key error)
12	00500006	Verdi	Giuseppe	SIN.EQPR11X (LAS)(AES Key)
13	35026217	Verdi	Giuseppe	SIE(QDS) WFZ661

Figure 65 – Reading present list of the repeater

7.8 Special cases

An installation is illustrated below where, either for different property reasons or for the number of devices to be monitored over 500 (Max 500 for each GE552Y052 unit), four different GE552Y053 repeater networks are required. Obviously, the following also applies when 2, 3, 5 or more repeater networks are required.

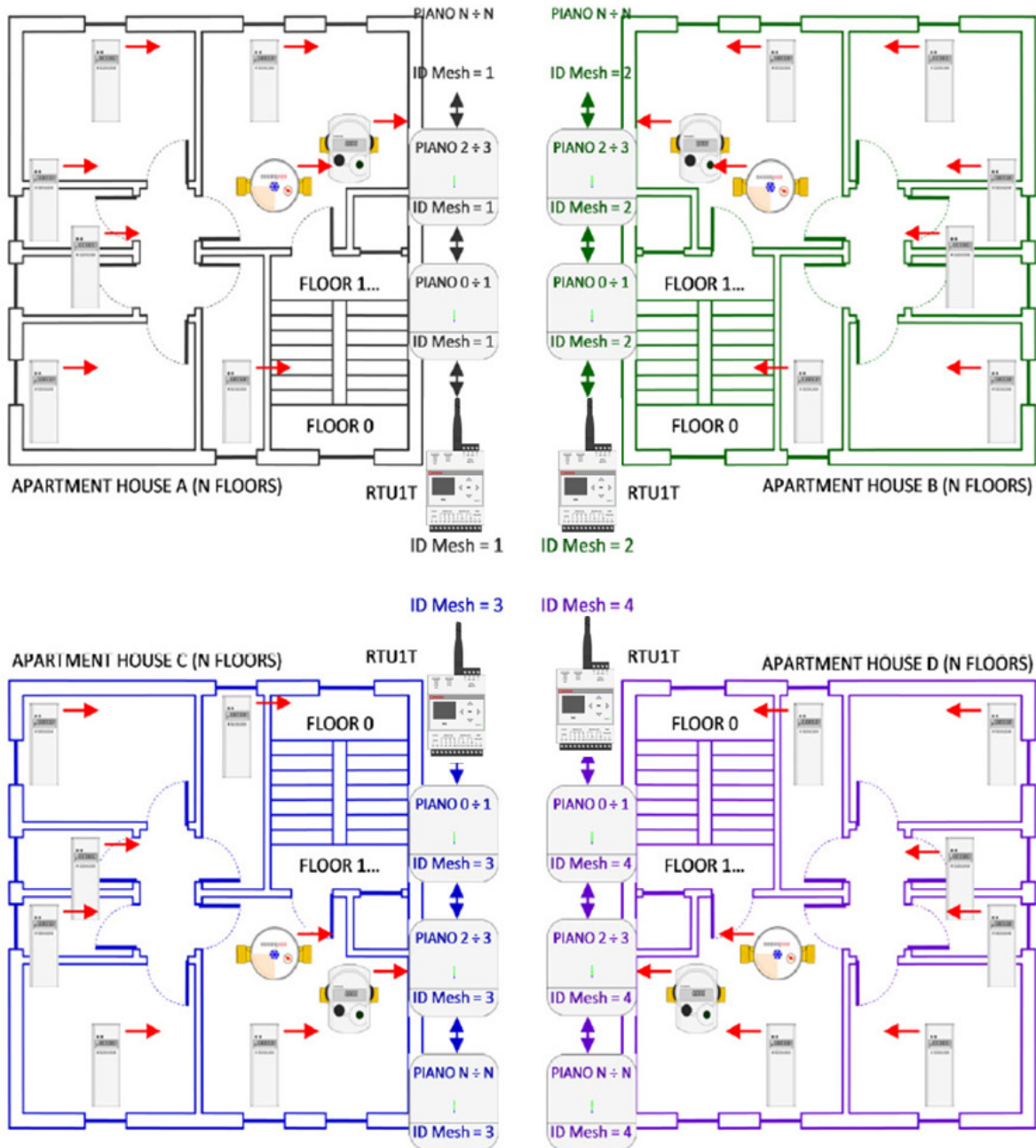


Figure 66 – Installation with 4 GE552Y053 repeater networks

To avoid interferences between different plants, assign a different **Mesh network ID** to each GE552Y052 plant. The same **Mesh network ID** should also be set on all Repeaters in the network for the RTU1T they communicate with.



IT - AVVERTENZE PER IL CORRETTO SMALTIMENTO DEL PRODOTTO

Questo prodotto rientra nel campo di applicazione della Direttiva 2012/19/UE riguardante la gestione dei rifiuti di apparecchiature elettriche ed elettroniche (RAEE). L'apparecchio non deve essere eliminato con gli scarti domestici in quanto composto da diversi materiali che possono essere riciclati presso le strutture adeguate. Informarsi attraverso l'autorità comunale per quanto riguarda l'ubicazione delle piattaforme ecologiche atte a ricevere il prodotto per lo smaltimento ed il suo successivo corretto riciclaggio.

Si ricorda, inoltre, che a fronte di acquisto di apparecchio equivalente, il distributore è tenuto al ritiro gratuito del prodotto da smaltire. Il prodotto non è potenzialmente pericoloso per la salute umana e l'ambiente, ma se abbandonato nell'ambiente impatta negativamente sull'ecosistema. Leggere attentamente le istruzioni prima di utilizzare l'apparecchio per la prima volta.

Si raccomanda di non usare assolutamente il prodotto per un uso diverso da quello a cui è stato destinato, essendoci pericolo di shock elettrico se usato impropriamente.

Il simbolo del bidone barrato, presente sull'etichetta posta sull'apparecchio, indica la rispondenza di tale prodotto alla normativa relativa ai rifiuti di apparecchiature elettriche ed elettroniche.

L'abbandono nell'ambiente dell'apparecchiatura o lo smaltimento abusivo della stessa sono puniti dalla legge.

EN - IMPORTANT INFORMATION FOR CORRECT DISPOSAL OF THE PRODUCT

This product falls into the scope of the Directive 2012/19/EU concerning the management of Waste Electrical and Electronic Equipment (WEEE). This product shall not be disposed in the domestic waste as it is made of different materials that have to be recycled at the appropriate facilities. Inquire through the municipal authority regarding the location of the ecological platforms to receive the product for disposal and its subsequent correct recycling. Furthermore, upon purchase of an equivalent appliance, the distributor is obliged to collect the product for disposal free of charge. The product is not potentially dangerous for human health and the environment, but if abandoned in the environment can have negative impact on the environment. Read carefully the instructions before using the product for the first time.

It is recommended that you do not use the product for any purpose rather than those for which it was intended, there being a danger of electric shock if used improperly.

The crossed-out wheeled dustbin symbol, on the label on the product, indicates the compliance of this product with the regulations regarding Waste Electrical and Electronic Equipment.

Abandonment in the environment or illegal disposal of the product is punishable by law.

FR - AVERTISSEMENTS POUR L'ÉLIMINATION CORRECTE DU PRODUIT

Ce produit entre dans le champ d'application de la directive 2012/19 / UE relative à la gestion des déchets équipements électriques et électroniques (DEEE). L'appareil ne doit pas être jeté avec les ordures ménagères car il est fait de différents matériaux pouvant être recyclés dans des centres appropriés. Renseignez-vous auprès de l'autorité locale concernant l'emplacement des plates-formes écologiques appropriées pour recevoir le produit pour sa destruction et son recyclage correct ultérieur. Il convient également de rappeler que, en cas d'achat d'un appareil équivalent, le distributeur est tenu de collecter le produit à détruire. Le produit n'est potentiellement pas dangereux pour la santé humaine et l'environnement, mais s'il est abandonné dans l'environnement, il a un impact négatif sur l'écosystème.

Lisez attentivement les instructions avant d'utiliser l'appareil pour la première fois. Il est interdit d'utiliser le produit pour un usage différent de celui auquel il était destiné, il y a risque de choc électrique si utilisé incorrectement.

Le symbole de la poubelle barrée sur l'étiquette de l'appareil indique sa correspondance produit à la législation relative aux déchets d'équipements électriques et électroniques.

L'abandon dans l'environnement de l'équipement ou l'élimination illégale de l'équipement est punissable par la loi.

DE - WICHTIGE HINWEISE ZUR KORREKTEN ENTSORGUNG DES PRODUKTS

Dieses Produkt fällt in den Anwendungsbereich der Richtlinie 2012/19/EU über die Entsorgung von Elektro- und Elektronik - Altgeräten (WEEE). Dieses Produkt darf nicht in den Hausmüll entsorgt werden, da es aus verschiedenen Materialien besteht, die in entsprechenden Einrichtungen recycelt werden müssen. Erkundigen Sie sich bei ihrer Gemeinde nach dem Standort des nächsten Recyclinghofs bzw. der nächsten Annahmestelle, um das Produkt dem Recycling zuzuführen bzw. fachgerecht zu entsorgen.

Darüber hinaus ist der Händler verpflichtet, das Produkt beim Kauf eines gleichwertigen Geräts kostenlos zu entsorgen.

Das Produkt ist für die menschliche Gesundheit und die Umwelt potenziell nicht gefährlich. Diese können sich aber, falls sie in der Umwelt gelangen, negativ auf diese auswirken. Lesen Sie daher vor dem ersten Gebrauch des Produkts die Inbetriebnahme-, Bedienungs- und Entsorgungsanweisungen sorgfältig durch. Es wird empfohlen, dass Sie das Produkt nur für den vorgesehenen Zweck verwenden.

Bei unsachgemäßer Verwendung bzw. Fehlgebrauch besteht die Gefahr eines elektrischen Schlags.

Das Symbol der durchgestrichenen Mülltonne auf dem Etikett des Produkts weist auf die Konformität dieses Produkts zu den Vorschriften für Elektro- und Elektronik-Altgeräte hin. Das Ablagern in der Umwelt oder die illegale Entsorgung des Produkts ist strafbar.

Additional information

For more information, go to www.giacomini.com or contact our technical assistance service:

Tel. +39 0322 923372 Fax. +39 0322 923255 consulenza.prodotti@giacomini.com

This document provides only general indications. Giacomini S.p.A. may change at any time, without notice and for technical or commercial reasons, the items included herewith. The information included in this technical sheet do not exempt the user from strictly complying with the rules and good practice standards in force.

Giacomini S.p.A. Via per Alzo, 39 - 28017 San Maurizio d'Opaglio (NO) Italy

