


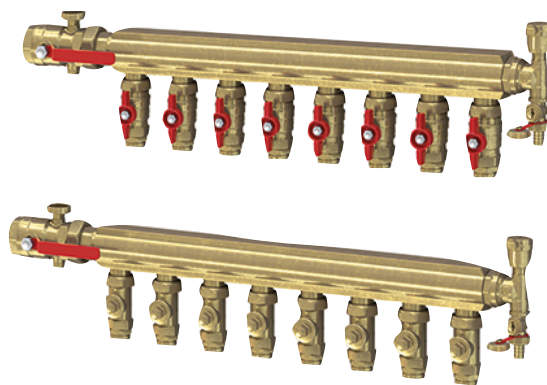
# R553KI, R501KI



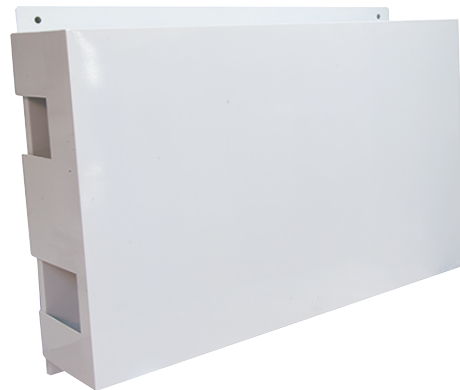
Energy  
Management

## Manifold for industrial radiant systems, with metal cabinet

Datasheet/Instruction  
0947EN  04/2026  
047U57738 - 047U57758



R553KI



R501KI

R553KI brass manifold for industrial radiant HVAC systems, including:

- 1 supply bar manifold with shut-off valves and T-handle on outlets, connections for Base 22 adaptor.
- 1 return bar manifold with control lockshield on outlets, connections for Base 22 adaptor.
- Shut-off ball valves with lever handle upstream of distribution manifolds, complete of thermometers with scale 0+120 °C.
- Self-sealing end-pieces equipped with automatic air vent valves and drain cocks.

R501KI metal cabinet for R553KI manifolds.

Made by an electro-galvanized frame and external electro-galvanized powder-coated door (white RAL9010).

Complete with adjustable metal brackets to support bar manifolds.

### ➤ Versions and product codes

PRODUCT CODE	CONNECTIONS MANIFOLD x OUTLETS	N° OF OUTLETS	CABINET R501KI
R553KY086		6	
R553KY087	G 1-1/2" x B.22	7	R501Y010 (980 x 700 x 230 mm)
R553KY088		8	

#### Accessories

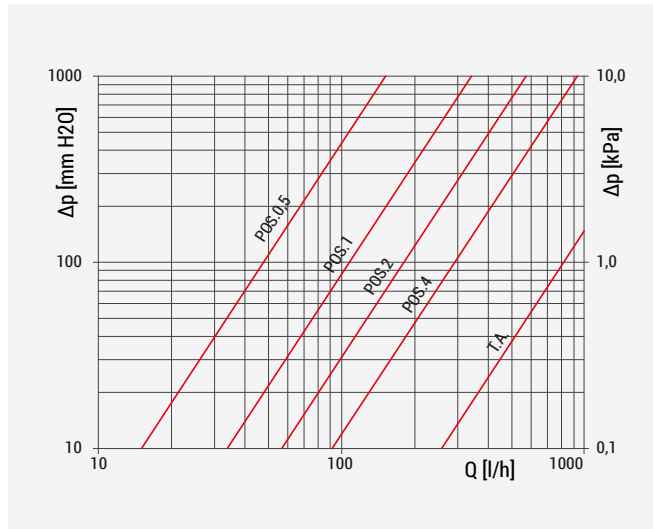
- R179, R179AM: Base 22 adaptors for connection to system pipes
- R501KI: Metal cabinet for R553KI manifolds

## Technical data

### Characteristics

- Fluids of use: water with glycol for HVAC systems
- Max. glycol percentage: 30%
- Temperature range: 5+110 °C
- Max. working pressure: 10 bar
- Max. pressure of air vent valves: 7 bar
- Center distance between manifold outlets: 80 mm

### Loss of pressure

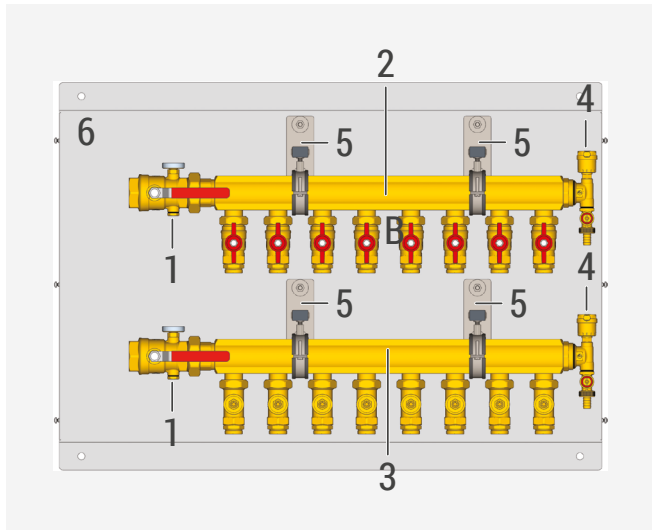


### Materials

- Manifold and terminal caps/plugs: EN 12165 CW617N brass
- Seals: EPDM
- Cabinet R501KI: electro-galvanized steel

N° OF LOCKSHIELD TURNS	Kv
0,5	0,48
1	1,17
2	1,86
4	2,96
T.A.	8,05

## Components

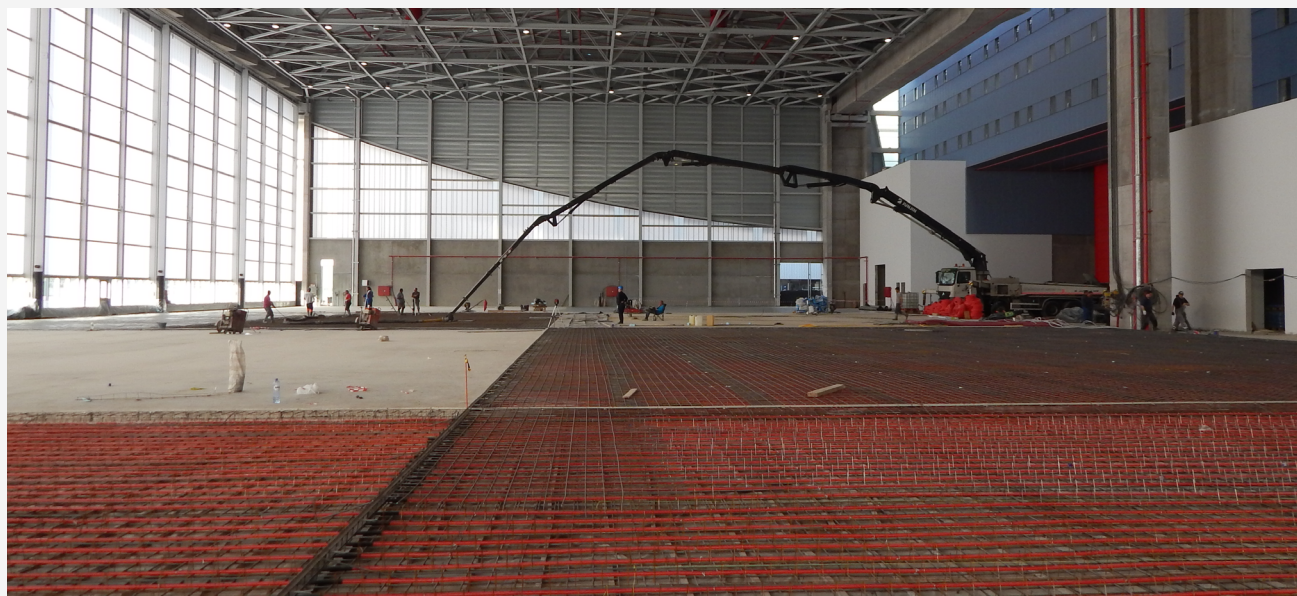


- 1 Shut-off ball valve with thermometer and housing for temperature probe
- 2 Supply manifold with shut-off ball valve on each outlet
- 3 Return manifold with lockshield on each outlet
- 4 Self-sealing end-piece equipped with automatic air vent valve and drain cock
- 5 Metal brackets
- 6 Metal cabinet R501KI

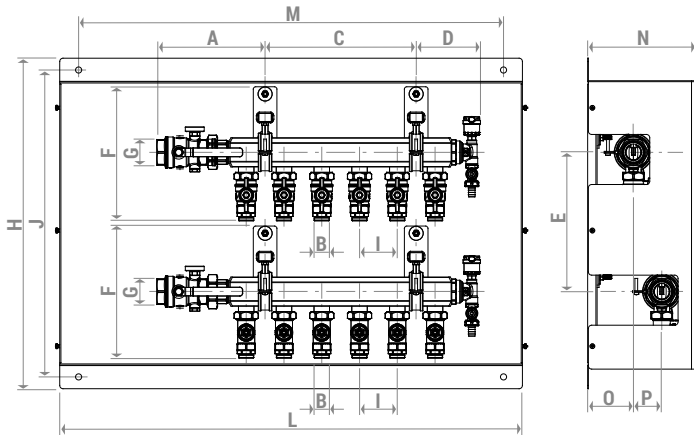
## ➤ Installation

- 1) Install the ball valves upstream of manifold and the end-pieces downstream.
- 2) Install manifold inside the R501KI metal cabinet.
- 3) Connect system pipes to manifold outlets using Base 22 adaptors, series R179 or R179AM.

### Typical application in industrial systems



## ➤ Dimensions



PRODUCT CODE	N°OF OUTLETS	G x B	A [mm]	C [mm]	D [mm]	E [mm]	F [mm]	H [mm]	I [mm]	J [mm]	L [mm]	M [mm]	N [mm]	O [mm]	P [mm]
R553KY086 + R501Y010	6			320											
R553KY087 + R501Y010	7	G 1-1/2" F x B.22	229	400	136	295	284	700	80	650	980	900	230	97	60
R553KY088 + R501Y010	8			480											

## ➤ Product specifications

### R553KI

Brass manifold for industrial radiant HVAC systems, including 1 supply bar manifold with shut-off valves and T-handle on each outlets; 1 return bar manifold with lockshields on each outlets; shut-off ball valves with lever handle and thermometers (scale 0+120 °C) upstream of distribution manifolds; self-sealing end-pieces equipped with automatic air vent valves and drain cocks. Temperature range: 5+110 °C. Max. working pressure: 10 bar. Max. pressure of air vent valves: 7 bar. Center distance between manifold outlets: 80 mm. Available with connection for Base 22 adaptors.

### R501KI

Metal cabinet for industrial radiant HVAC systems manifolds. Includes electro-galvanized frame and external electro-galvanized powder-coated cover (white RAL9010). Equipped with adjustable metal brackets to support bar manifolds. Dimensions 980 x 700 x 230 mm.

**⚠ Safety Warning.** Installation, commissioning and periodical maintenance of the product must be carried out by qualified operators in compliance with national regulations and/or local standards. A qualified installer must take all required measures, including use of Individual Protection Devices, for his and others' safety. An improper installation may damage people, animals or objects towards which Giacomini S.p.A. may not be held liable.

**♻ Package Disposal.** Carton boxes: paper recycling. Plastic bags and bubble wrap: plastic recycling.

**ℹ Additional information.** For more information, go to [giacomini.com](http://giacomini.com) or contact our technical assistance service. This document provides only general indications. Giacomini S.p.A. may change at any time, without notice and for technical or commercial reasons, the items included herewith. The information included in this technical sheet do not exempt the user from strictly complying with the rules and good practice standards in force.

**♻ Product Disposal.** Do not dispose of product as municipal waste at the end of its life cycle. Dispose of product at a special recycling platform managed by local authorities or at retailers providing this type of service.