



T439L

Description

Kit **T439L** for toweldryers composed of micrometric valve with thermostatic option and angle lockshield, brilliant chrome-plating, with rear connection for adaptor for copper / plastic / multilayer pipe.
Available in versions with left valve and right lockshield or right valve and left lockshield. ABS sealing collar with brilliant chrome-plating, product code T175DX011 included.

Versions and product codes

Product code	Connections	Type
T439LX023	1/2" x 16	Left valve, right lockshield
T439LX033	1/2" x 16	Right valve, left lockshield

Additional accessories

- T470CX001: brilliant chrome thermostatic head with CLIP CLAP connection
- T178C, T179M: adaptors for pipe connection

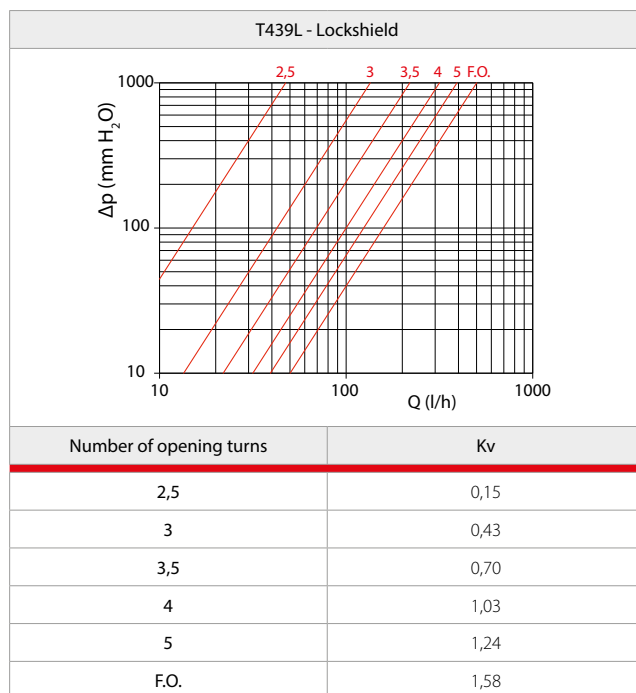
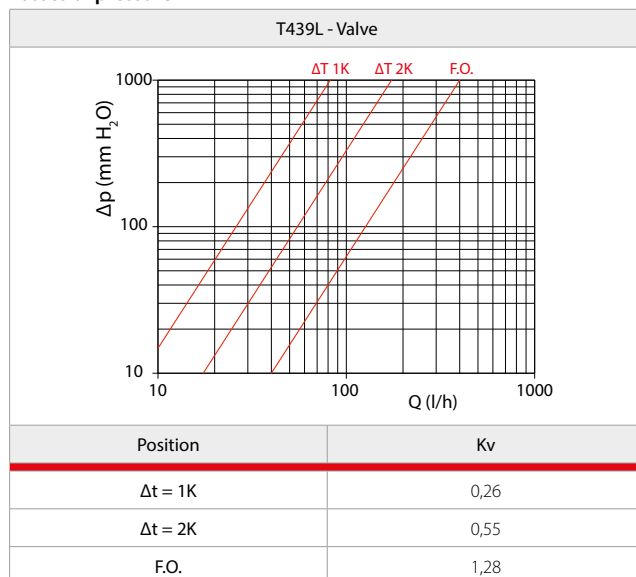
Technical data

- Temperature range: 5÷110 °C
- Max. working pressure: 10 bar
- Maximum differential pressure: 1,4 bar

Materials

- Body: brass UNI EN 12165 CW617N, with brilliant chrome plating
- Integrated command stem: stainless steel
- Seal on command stem with O-ring: EPDM
- Handwheel: Chrome-plated ABS
- Sealing collar: brilliant chrome-plating ABS

Losses of pressure

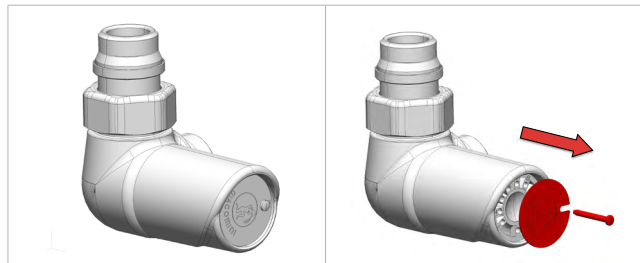


Main features

Micrometric adjustment

The micrometric valves with thermostatic option are characterised by the fact that they allow micrometric adjustment, through which it is possible to partially open a manual function valve.

Micrometric adjustment can be carried out by removing the specially-designed pin from the manual handwheel with the help of a small screwdriver, and replacing it in the position identified by the positioning of the plate.

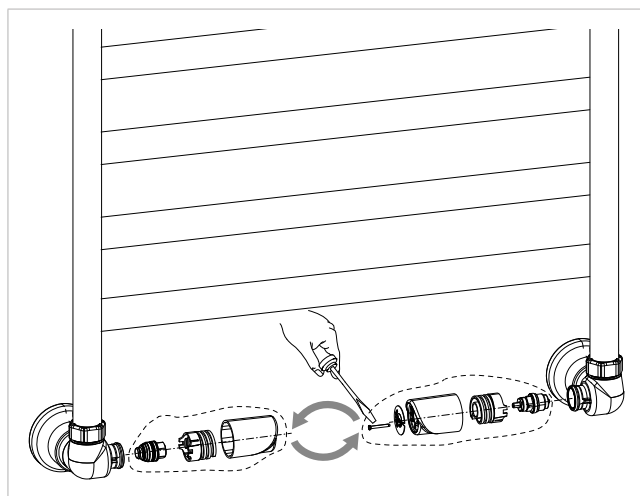


Position	2	3	4	6	8
Kv	0,43	0,63	0,81	1,04	1,28

Reversing the lockshield body

Before installation, using the P56TY001 key, it is possible to invert the position of the bonnet with thermostatic option and the lockshield, on the reciprocal valve bodies. This operation must only be carried out in exceptional cases, to avoid damage to plastic components and/or to the surface finish of the valve bodies during the inversion process.

In all other cases, users are advised to check the correct positioning of the pair beforehand with regard to the configuration of the system onto which it is due to be installed.



Installation

Replacing the bonnet

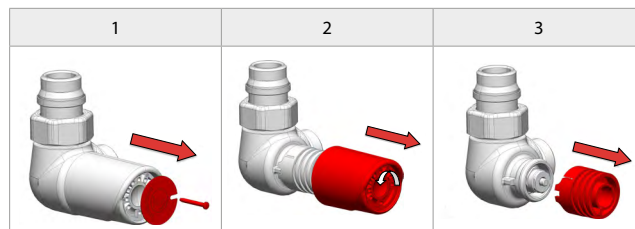
Warning.
With thermostatic head installed on the valve body, to avoid excessive loads on the seal gasket of the thermostatic bonnet (with the resulting risk of jamming and locking) during the summer, it is recommended to place the handwheel of the thermostatic head in the fully open position, marked by the symbol *.

In case of malfunction of the valve it is possible to replace the O-ring, by unscrewing the nut using an hexagonal wrench 11 mm

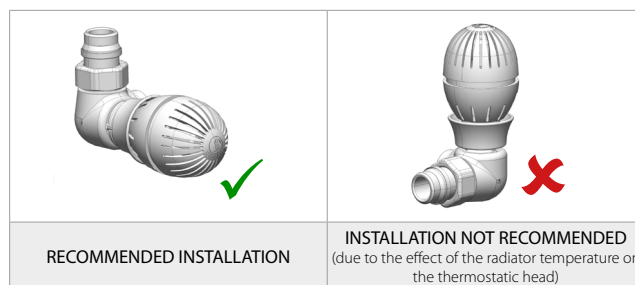
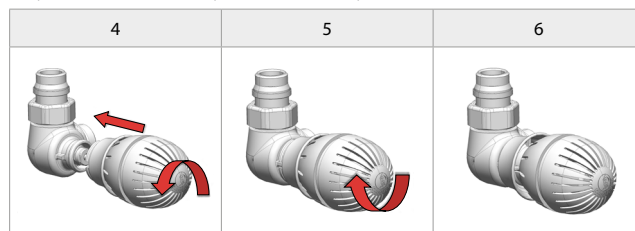
If the problem persists it is also possible to replace the complete bonnet using the appropriate key R400.

Installation of thermostatic head

Before fitting the thermostatic head on the valve, remove the pin and the plate from the manual handwheel (1), remove the handwheel from the valve body by simply turning anticlockwise (2), and finally, remove the small pipe (3).



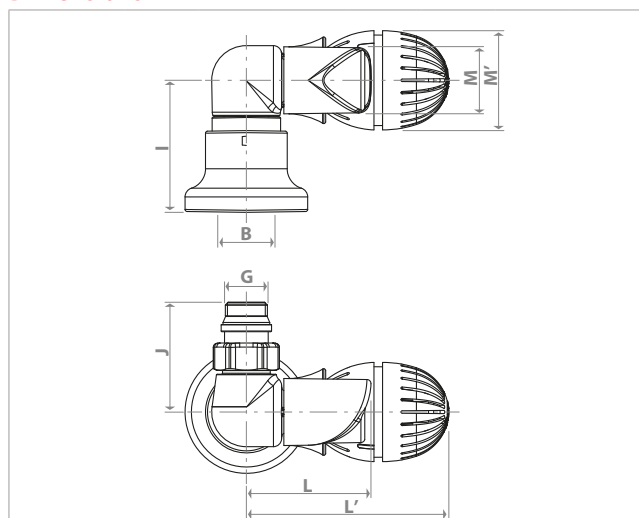
In order to couple correctly with the valve body, the thermostatic head must be fully open; once it has been assembled, close the head completely then reopen it as far as the required calibration position.



Adjusting the thermostatic head

Position	*	1	2	3	4	5	⊙
T [°C]	8	10	15	20	25	30	32

Dimensions



Product code	G x B	L [mm]	L' [mm]	J [mm]	I [mm]	M [mm]	M' [mm]
T439LX023	1/2" x 16	60÷65	95÷100	54	59÷83	33	49
T439LX023							

Product specifications

T439L

Micrometric angled valve kit for toweldryers with thermostatic option and double-angled lockshield, brilliant chrome-plating, with connection for adaptor for copper / plastic / multilayer pipe. Body in brass UNI EN 12165 CW617N. Handwheel for manual command in ABS with brilliant chrome-plating. Integrated command stem in stainless steel. Seal on command stem with O-ring in EPDM. ABS sealing collar with brilliant chrome-plating, product code T175DX011 included. Temperature range 5÷110 °C. Max. working pressure 10 bar. 1/2" M radiator connection with self-sealing tail piece in EPDM and connection for T178C and T179M adaptors.



Safety Warning

Installation, commissioning and periodical maintenance of the product must be carried out by qualified operators in compliance with national regulations and/or local standards. A qualified installer must take all required measures, including use of Individual Protection Devices, for his and others' safety.

An improper installation may damage people, animals or objects towards which Giacomini S.p.A. may not be held liable.



Package Disposal

Carton boxes: paper recycling.
Plastic bags and bubble wrap: plastic recycling.



Product Disposal

Do not dispose of product as municipal waste at the end of its life cycle.

Dispose of product at a special recycling platform managed by local authorities or at retailers providing this type of service.

Additional information

For more information, go to www.giacomini.com or contact our technical assistance service: ☎ +39 0322 923372 📞 +39 0322 923255 ✉ consulenza.prodotti@giacomini.com
This document provides only general indications. Giacomini S.p.A. may change at any time, without notice and for technical or commercial reasons, the items included herewith.
The information included in this technical sheet do not exempt the user from strictly complying with the rules and good practice standards in force.

Giacomini S.p.A. Via per Alzo, 39 - 28017 San Maurizio d'Opaglio (NO) Italy