

R285F



Energy
Management

Datasheet
0903EN 03/2024

Ball valve for water for heating systems, standard port



Ball valve, with female threaded connection-nut female, with integrated check valve, specific for circulator connection, for pipes with high insulation thickness. Standard port.

➤ Versions and product codes

PRODUCT CODE	CONNECTIONS	FINISHING	HANDLE TYPE	HANDLE COLOR	NOTES
R285FY001	Nut G 1-1/2"F x G 1"F	Brass	Extended T-handle	Red, blue plates	For circulator connection, for pipes with high insulation thickness, with check valve
R285FY003	Nut G 2"F x G 1-1/4"F	Brass	Extended T-handle	Red, blue plates	For circulator connection, for pipes with high insulation thickness, with check valve

Optional

- R540FY002: red contact thermometer, for installation in extended T-handles, scale 0÷120 °C, Ø 40 mm
- R540FY022: blue contact thermometer, for installation in extended T-handles, scale 0÷120 °C, Ø 40 mm

Technical data

Main features and materials

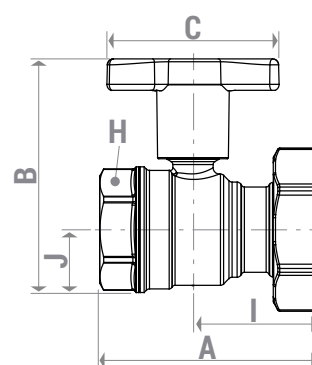
- Suitable for water for heating/cooling systems and not dangerous gas
- Standard port
- Valve made of UNI EN 12165 CW617N brass
- Stem with double O-Ring
- Nut with anti-corrosion coating, with guarantee seal and hologram
- Plastic extended T-handle, with red and blue plates
- Integrated R288 check valve

Field of applications (with R288 check valve integrated)

- Temperature range: -20÷100 °C (-20 °C with 50 % glycol solutions)
- Max. working pressure at 20 °C with water: 1,6 MPa (16 bar)

Dimensions and Kv

PRODUCT CODE	DN	A [mm]	I [mm]	B [mm]	J [mm]	C [mm]	H [mm]	Kv (with restraint)
R285FY001	22	79	41	102	30	78	wr.40	3,5
R285FY003	28	99	56	113	36	78	wr.48	7,1



Product specifications

R285F

Ball valve, with female threaded connection-nut female, with integrated check valve, specific for circulator connection, for pipes with high insulation thickness. Suitable for water for heating/cooling systems and not dangerous gas. Valve made of UNI EN 12165 CW617N brass. Standard port. Plastic extended T-handle, with red and blue plates. Stem with double O-Ring. Nut with anti-corrosion coating, with guarantee seal and hologram. Integrated R288 check valve. Temperature range: -20÷100 °C (-20 °C with 50 % glycol solutions). Max. working pressure at 20 °C with water: 1,6 MPa (16 bar).

⚠ Safety Warning. Installation, commissioning and periodical maintenance of the product must be carried out by qualified operators in compliance with national regulations and/or local standards. A qualified installer must take all required measures, including use of Individual Protection Devices, for his and others' safety. An improper installation may damage people, animals or objects towards which Giacomini S.p.A. may not be held liable.

♻ Package Disposal. Carton boxes: paper recycling. Plastic bags and bubble wrap: plastic recycling.

ℹ Additional information. For more information, go to giacomini.com or contact our technical assistance service. This document provides only general indications. Giacomini S.p.A. may change at any time, without notice and for technical or commercial reasons, the items included herewith. The information included in this technical sheet do not exempt the user from strictly complying with the rules and good practice standards in force.

♻ Product Disposal. Do not dispose of product as municipal waste at the end of its life cycle. Dispose of product at a special recycling platform managed by local authorities or at retailers providing this type of service.