

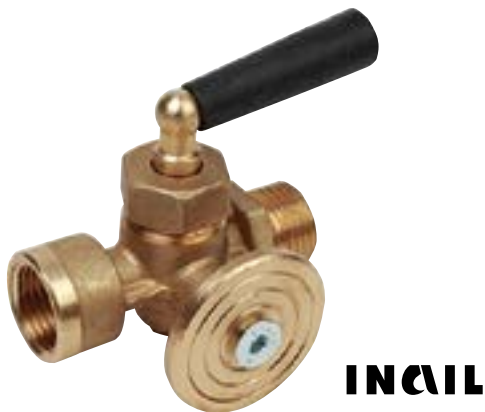
R228I

3-way pressure gauge holder



Energy
Management

Datasheet
1102EN  10/2022



3-way pressure gauge holder with flange for insertion of inspection gauge.

The pressure value can be read only by moving the lever of the pressure gauge holder.

INAIL (I.S.P.E.S.L.) compliant.

➤ Versions and product codes

PRODUCT CODE	CONNECTIONS
R228IY001	G 1/4"F x G 1/4"M
R228IY002	G 3/8"F x G 3/8"M
R228IY003	G 1/2"F x G 1/2"M

➤ Technical data

- Fluids: non-hazardous liquids (group 2)
- Max. working temperature: 90 °C
- Max. working pressure: 16 bar
- Equipped with flange for pressure gauge with cap
- Complying with PED directive (2014/68/UE): no marking pursuant to art. 4.3
- INAIL (I.S.P.E.S.L.) compliant.

Materials

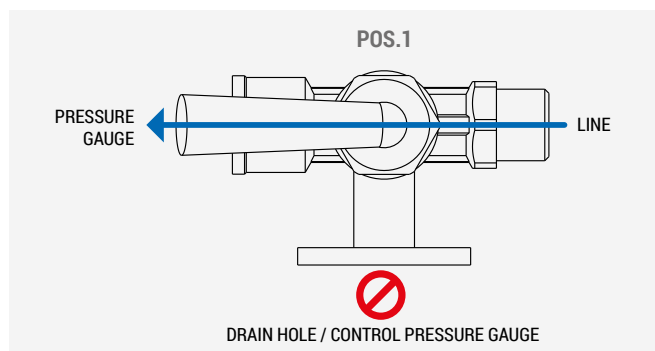
- Body: brass
- Lever: plastic

Operation

The lever features 4 positions.

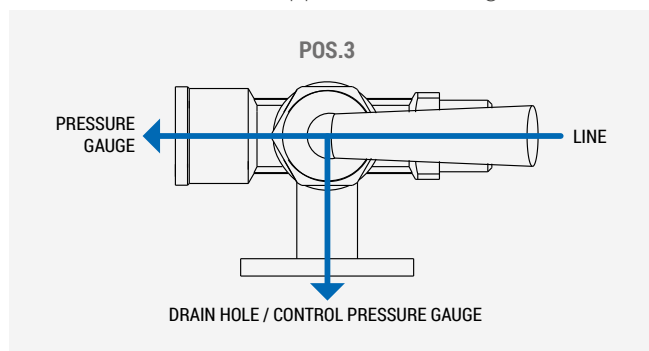
Position 1: lever towards pressure gauge

Reading of pressure value on the gauge installed.
Drain hole closed



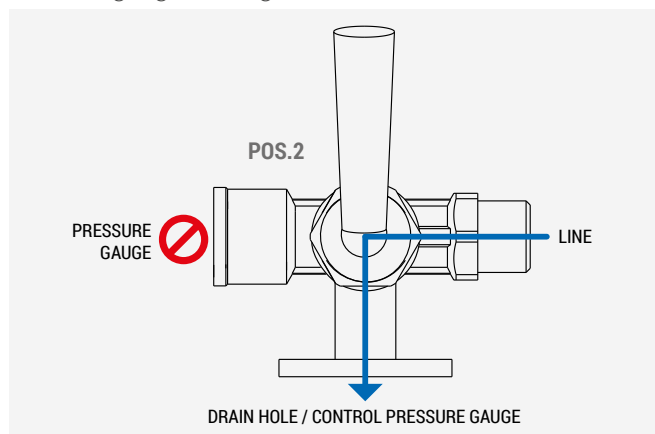
Position 3: lever towards line

Comparison between the value of the pressure gauge installed and of the one applied on the flange.



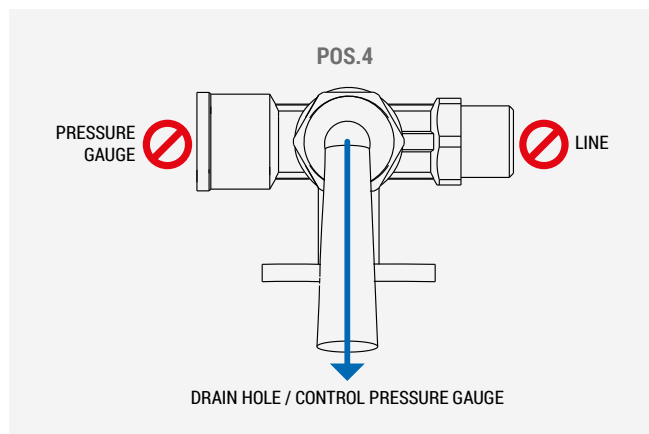
Position 2: lever on opposite side of drain hole

Drainage of the fluid contained in the line.
Pressure gauge reading disabled

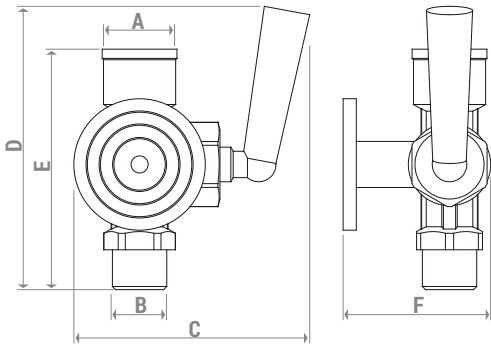


Position 4: lever towards drain hole

Drainage of the fluid contained in the pressure gauge.
Line closed



➤ Dimensions



PRODUCT CODE	CONNECTIONS A x B	C [mm]	D [mm]	E [mm]	F [mm]
R2281Y001	G 1/4" F x G 1/4" M	72	80	59	45
R2281Y002	G 3/8" F x G 3/8" M	75	86	73	45
R2281Y003	G 1/2" F x G 1/2" M	75	80	69	45

➤ Product specifications

R2281

3-way pressure gauge holder with flange for insertion of inspection gauge. Brass body. Plastic lever. Equipped with flange for pressure gauge with cap. Max. working temperature: 90 °C. Max working pressure: 16 bar. Complying with PED directive (2014/68/UE): no marking pursuant to art. 4.3. INAIL (I.S.P.E.S.L.) compliant.

⚠ Safety Warning. Installation, commissioning and periodical maintenance of the product must be carried out by qualified operators in compliance with national regulations and/or local standards. A qualified installer must take all required measures, including use of Individual Protection Devices, for his and others' safety. An improper installation may damage people, animals or objects towards which Giacomini S.p.A. may not be held liable.

♻ Package Disposal. Carton boxes: paper recycling. Plastic bags and bubble wrap: plastic recycling.

ℹ Additional information. For more information, go to giacomini.com or contact our technical assistance service. This document provides only general indications. Giacomini S.p.A. may change at any time, without notice and for technical or commercial reasons, the items included herewith. The information included in this technical sheet do not exempt the user from strictly complying with the rules and good practice standards in force.

♻ Product Disposal. Do not dispose of product as municipal waste at the end of its life cycle. Dispose of product at a special recycling platform managed by local authorities or at retailers providing this type of service.