

GE552Y124/125/126/127 (GE552-2)



Water
Management

Domestic water meters for Wireless M-Bus centralization

Datasheet
0527EN 11/2022



GE552Y124, GE552Y125
COLD WATER



GE552Y126, GE552Y127
HOT WATER

Single-jet domestic water meter **GE552-2** with dry dial and direct reading on 8 numerical rollers. 360° adjustable dial. Pre-setting for Wireless M-Bus radio module (GE552Y016) or wired M-Bus (GE552Y014) for fitting on water meter dial.

➤ Versions and product codes

PRODUCT CODE	CONNECTIONS		CENTER DISTANCE [mm]	DOMESTIC WATER TYPE	CENTRALIZATION
GE552Y124	DN15	G 3/4" M	110	Cold	Possibility of centralization wired M-Bus or Wireless M-Bus
GE552Y126	DN15	G 3/4" M	110	Hot	
GE552Y125	DN20	G 1" M	130	Cold	
GE552Y127	DN20	G 1" M	130	Hot	

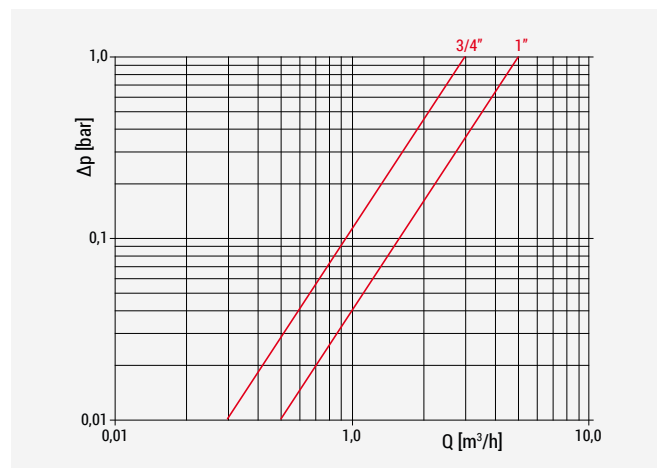
Accessories

- GE552Y014: wired M-Bus module for installation on water meter dial
- GE552Y016: Wireless M-Bus module for installation on water meter dia

Technical data

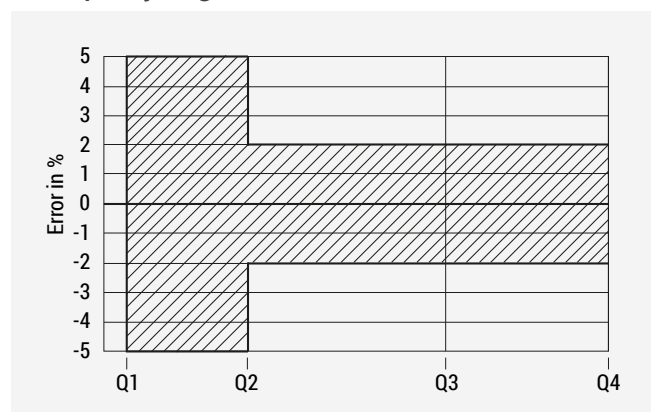
- Max. working temperature:
30 °C for domestic cold water meter
90 °C for domestic hot water meter
- Max. working pressure: 16 bar
- Horizontal or vertical installation
- Dial with mechanical totalizers and index for partial consumptions and flow
- CE marking (MID compliance)

Loss of pressure



PRODUCT CODE	Kv
GE552Y124	3,0
GE552Y126	3,0
GE552Y125	5,0
GE552Y127	5,0

Error quality diagram



GE552Y124, GE552Y126 (3/4")

INSTALLATION	Q3 [m³/h]	Q1 [m³/h]	Q2 [m³/h]	Q4 [m³/h]
Horizontal	2,5	0,025	0,04	3,1
Vertical	2,5	0,025	0,04	3,1

Q2 / Q1 = 1,6

Q3 / Q1 = 100 (horizontal installation)

Q3 / Q1 = 50 (vertical installation)

GE552Y125, GE552Y127 (1")

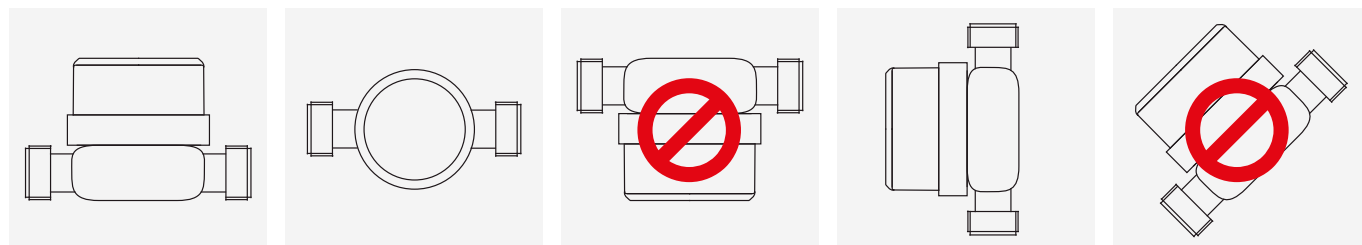
INSTALLATION	Q3 [m³/h]	Q1 [m³/h]	Q2 [m³/h]	Q4 [m³/h]
Horizontal	4,0	0,04	0,064	5
Vertical	4,0	0,04	0,064	5

Q2 / Q1 = 1,6

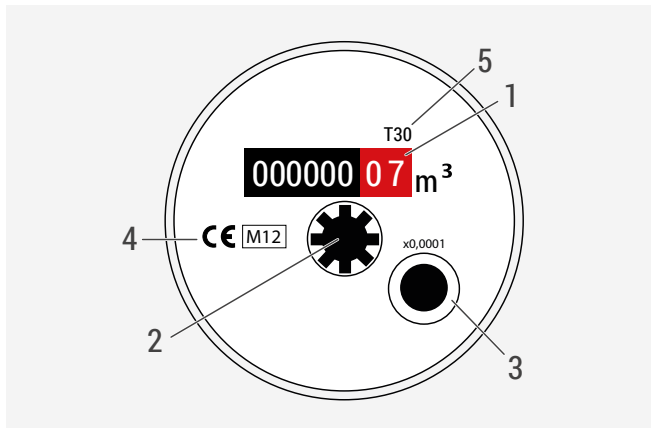
Q3 / Q1 = 100 (horizontal installation)

Q3 / Q1 = 50 (vertical installation)

Allowed installation positions



➤ Operation



- | | |
|---|----------------------------------------------------------------------------------|
| 1 | 8-digit mechanical totalizer for cumulative consumption (max. value 99999,99 m³) |
| 2 | Rotary indicator for control of flow presence |
| 3 | Totalizers for current consumptions (1 turn = 0,1 liter) |
| 4 | CE marking (MID) |
| 5 | Max. working temperature: T30 for DCW/ T90 for DHW |

The water meter includes a brass flow rate meter section housing the single-jet rotor and a totalizer protected by a clear plastic cover.

The inlet features a filter that stops larger debris from entering the meter chamber.

The 8-digit totalizer shows the cumulative domestic water consumption; this is a mechanical device and requires no power.

A rotary indicator signals the presence of a flow, while a totalizer shows the current consumption in liters.

➤ Data centralization

There are two options for data centralization:

- through wired M-Bus, by installing the **GE552Y014** module on the water meter dial and enabling communication with **GE552-4** centralization components.
- through Wireless M-Bus, by installing the **GE552Y016** module on the water meter dial and enabling communication with **GE552-W** centralization components.

GE552Y014 wired M-Bus module



- Interface: M-Bus
- Power: from M-Bus network + 3 V lithium battery
- Battery life: 1 year with bus disconnected (under optimal conditions)
- Cable length: 2 m
- Range: based on Master M-Bus
- Working temperature range: 1÷55 °C
- Protection class: IP65
- Transmitted data: volume (consumption), alarm signals
- Alarm signals: low battery, module removal, anti-magnetic fraud protection, exceeded Qmax, excessive inverse flow, system leakage

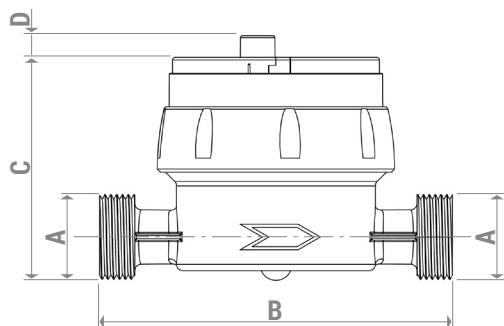
GE552Y016 Wireless M-Bus module



- Radio interface: Wireless M-Bus complying with EN 13757-4 @868 MHz
- Transmission power: ≤ 10 mW
- Power: 3,6 V lithium battery
- Battery max. life: 10 years (under optimal conditions)
- Configuration: via radio with antenna and dedicated software
- Working temperature range: 1÷55 °C
- Protection class: IP65
- Transmitted data: volume (consumption), inverse flow quantity, historical data up to 12 months, alarm battery status
- Alarm signals: low battery, module removal, anti-magnetic fraud protection, exceeded Qmax, excessive inverse flow, system leakage

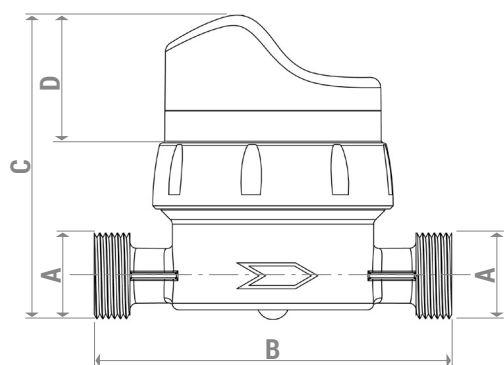
➤ Dimensions

GE552-2 WATER METER



PRODUCT CODE	CONNECTIONS A	B [mm]	C [mm]	D [mm]
GE552Y124	G 3/4"M	110	69	7
GE552Y126	G 3/4"M	110	69	7
GE552Y125	G 1"M	130	73	7
GE552Y127	G 1"M	110	73	7

WATER METER + GE552Y014 WIRED M-BUS MODULE / WATER METER + GE552Y016 WIRELESS M-BUS MODULE



PRODUCT CODE	CONNECTIONS A	B [mm]	C [mm]	D [mm]
GE552Y124/126 +GE552Y014	G 3/4"M	110	94	29
GE552Y125/127 +GE552Y014	G 1"M	130	98	29
GE552Y124/126 +GE552Y016	G 3/4"M	110	85	21
GE552Y125/127 +GE552Y016	G 1"M	130	89	21

➤ MID compliance

When used for commercial transactions, the water meters are classified as measurement instruments subject to legal metrology rules. GE552Y124-125-126-127 domestic water meters comply with Directive 2014/32/EU standards for measurement instruments (MID - Measurement Instrument Directive), received in Italy through Law Decree 2 February 2007, n. 22 (Official Gazette n. 64 of 17 March 2007) and subsequent updating Law Decree 84/2016.

The compliance certificate 0119-SJ-A011-08 has been issued by the Czech Metrological Institute.

NOTE. The additional metrological marking is on the front of every device, next to the CE symbol, and it includes an "M" followed by the last two numbers of the marking year inside a rectangle.

➤ Reference standards

- CE marking
- MID directive (2014/32/EU)

Product specifications

GE552Y124

Single-jet domestic cold water meter. Connections G 3/4" M. DN15. 360° adjustable dry dial with direct reading on 8 numerical rollers. Permanent flow rate Q3 2,5 m³/h. Installation center distance 110 mm. Max. working temperature 30 °C. Max. working pressure 16 bar. CE marking (MID compliance). Pre-setting for Wireless M-Bus module GE552Y016 or wired M-Bus module GE552Y014, for fitting on water meter dial.

GE552Y126

Single-jet domestic hot water meter. Connections G 3/4" M. DN15. 360° adjustable dry dial with direct reading on 8 numerical rollers. Permanent flow rate Q3 2,5 m³/h. Installation center distance 110 mm. Max. working temperature 90 °C. Max. working pressure 16 bar. CE marking (MID compliance). Pre-setting for Wireless M-Bus module GE552Y016 or wired M-Bus module GE552Y014, for fitting on water meter dial.

GE552Y125

Single-jet domestic cold water meter. Connections G 1" M. DN20. 360° adjustable dry dial with direct reading on 8 numerical rollers. Permanent flow rate Q3 4,0 m³/h. Installation center distance 110 mm. Max. working temperature 30 °C. Max. working pressure 16 bar. CE marking (MID compliance). Pre-setting for Wireless M-Bus module GE552Y016 or wired M-Bus module GE552Y014, for fitting on water meter dial.

GE552Y127


Single-jet domestic hot water meter. Connections G 1" M. DN20. 360° adjustable dry dial with direct reading on 8 numerical rollers. Permanent flow rate Q3 4,0 m³/h. Installation center distance 110 mm. Max. working temperature 90 °C. Max. working pressure 16 bar. CE marking (MID compliance). Pre-setting for Wireless M-Bus module GE552Y016 or wired M-Bus module GE552Y014, for fitting on water meter dial.


GE552Y014


M-Bus module for fitting on dial of water meters GE552Y124-125-126-127 for data centralization through wired M-Bus.


GE552Y016

Wireless M-Bus module for fitting on dial of water meters GE552Y124-125-126-127 for data centralization through Wireless M-Bus connection.

 **Safety Warning.** Installation, commissioning and periodical maintenance of the product must be carried out by qualified operators in compliance with national regulations and/or local standards. A qualified installer must take all required measures, including use of Individual Protection Devices, for his and others' safety. An improper installation may damage people, animals or objects towards which Giacomini S.p.A. may not be held liable.

 **Package Disposal.** Carton boxes: paper recycling. Plastic bags and bubble wrap: plastic recycling.

 **Additional information.** For more information, go to giacomini.com or contact our technical assistance service. This document provides only general indications. Giacomini S.p.A. may change at any time, without notice and for technical or commercial reasons, the items included herewith. The information included in this technical sheet do not exempt the user from strictly complying with the rules and good practice standards in force.

 **Product Disposal.** Do not dispose of product as municipal waste at the end of its life cycle. Dispose of product at a special recycling platform managed by local authorities or at retailers providing this type of service.