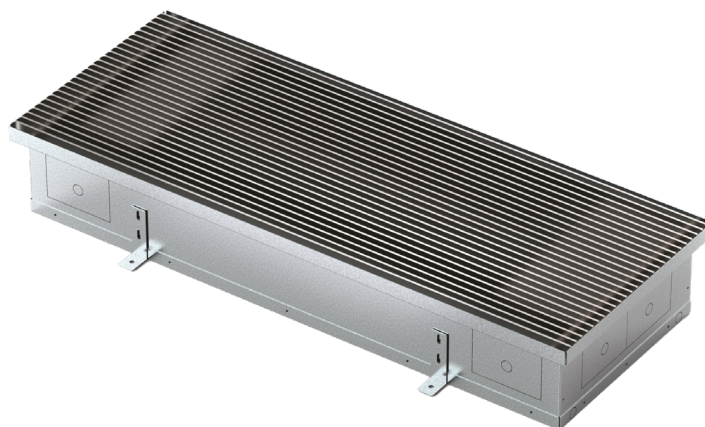


Fan coil for in-floor installation

Datasheet
1127EN  01/2026

High-efficiency fan coil for flush-mount in-floor installation, fit for architectonic contexts with large facades requiring sun shading in summer or protection from uncomfortable cold drafts in winter.

The fan coil creates an air barrier which envelopes the exposed glass surfaces to neutralize thermal discomfort.

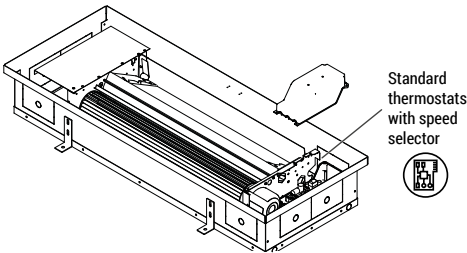
Main features

- 3 different output versions
- Compact dimensions and reduced installation space
- 2-pipe version, with right-side connections
- DC inverter technology for very low energy consumptions and state-of-the-art operational stability
- Top-notch working quietness
- Electronic cards for wall-mount remote control with fix speed
- "Open window" dry contact inlet for automatic on/off control of the fan coil.

Complete with:

- galvanized metal case for concealed in-floor installation, it enables to perform wiring and hydronic connections to install the unit
- walkable covering grid: it perfectly matches the case and includes a fix deflector to distribute the air flow. Easy to remove for full maintenance of the unit.

➤ Versions and product codes

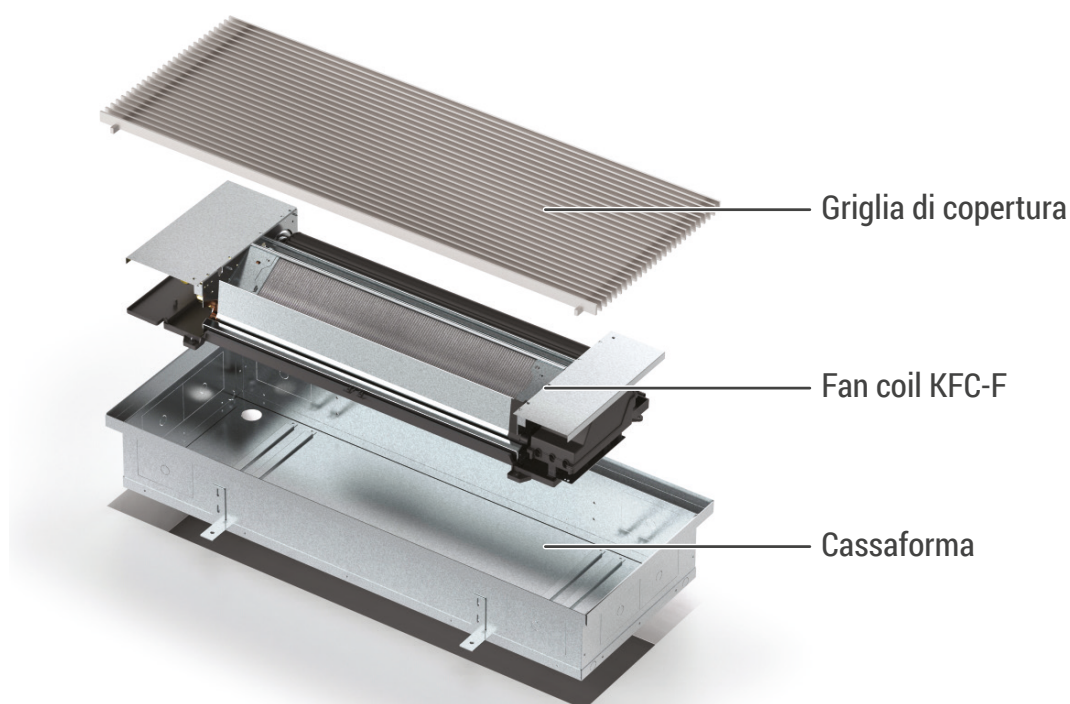
PRODUCT CODE	VERSION	CONNECTIONS	CHARACTERISTICS
KFCFF004	400	3/4"E right-sided	Electronic board for wall remote control with fix speeds 
KFCFF006	600		
KFCFF008	800		

Completion codes

- **KFCFAC004**: galvanized metal case for flush-mount in-floor installation, dimensions 895 x 431 x 189 mm, for KFC-F version 400
- **KFCFAC006**: galvanized metal case for flush-mount in-floor installation, dimensions 1095 x 431 x 189 mm, for KFC-F version 600
- **KFCFAC008**: galvanized metal case for flush-mount in-floor installation, dimensions 1295 x 431 x 189 mm, for KFC-F version 800
- **KFCFAG004**: aluminum walkable covering grid, dimensions 890 x 427 x 30 mm, for KFC-F version 400
- **KFCFAG006**: aluminum walkable covering grid, dimensions 1090 x 427 x 30 mm, for KFC-F version 600
- **KFCFAG008**: aluminum walkable covering grid, dimensions 1290 x 427 x 30 mm, for KFC-F version 800

Accessories

- **R439KFCY001**: connection kit for fan coils with 3/4"E connections and increased Kv, composed of: insulated angle supply valve with manual handwheel and M30 x 1,5 mm connection; insulated angle return lockshield with mechanical adjustment using a 6 mm hex key; straight spacer fitting with manual air vent valve; nr.2 90° elbow fittings
- **R473HEX001**: thermo-electric actuator, normally closed, equipped with adaptor for M30 x 1,5 mm connection



Technical data

VERSION	m.u.	400	600	800
COOLING PERFORMANCE (W 7/12 °C; A 27 °C)				
Cooling total output ⁽¹⁾	kW	1,21	1,62	2,12
Cooling sensible output ⁽¹⁾	kW	1,01	1,44	1,99
Water flow rate ⁽¹⁾	l/h	208	279	365
Losses of pressure ⁽¹⁾	kPa	11,2	5,1	5,3
HEATING PERFORMANCE (W 45/40 °C; A 20 °C)				
Heating output ⁽²⁾	kW	1,51	2,03	2,62
Water flow rate ⁽²⁾	l/h	260	349	451
Losses of pressure ⁽²⁾	kPa	16,1	7,3	8,1
HYDRAULIC DATA				
Coil water content	L	0,5	0,61	0,77
Max working pressure	bar	10	10	10
Hydraulic connections	"		3/4"E	
AERUALIC DATA				
Air flow rate at max speed	m³/h	228	331	440
Air flow rate at medium speed	m³/h	155	229	283
Air flow rate at min speed	m³/h	84	124	138
Max static pressure available	Pa	10	10	10
ELECTRIC DATA				
Power supply voltage	V/ph/Hz		230/1/50	
Power absorbed at max speed	W	19	20	29
Max current absorbed	A	0,16	0,18	0,26
Power absorbed at max speed	W	4	4	4
ACOUSTIC DATA				
Max acoustic power ⁽³⁾	dB(A)	53	54	55
Acoustic pressure at max air flow rate ⁽⁴⁾	dB(A)	40	41	42
Acoustic pressure at medium air flow rate ⁽⁴⁾	dB(A)	33	34	34
Acoustic pressure at min air flow rate ⁽⁴⁾	dB(A)	25	25	26
DIMENSIONS AND WEIGHTS				
Total width	mm	895	1095	1295
Total height	mm	431	431	431
Total depth	mm	189	189	189
Net weight	kg	14,0	16,0	19,0

(1) Coil delivery water temperature 7 °C, Coil return water temperature 12 °C, Air room temperature 27 °C d.b. and 19 °C h.b. (according to EN 1397)

(2) Coil delivery water temperature 45 °C, Coil return water temperature 40 °C, Air room temperature 20 °C d.b. and 15 °C h.b. (according to EN 1397)

(3) Acoustic power measured according to EN 16583

(4) Acoustic pressure from 1 m measured according to ISO 7779

➤ Installation example



➤ Reference standards

CE and UKCA certification.

The CE marking certifies compliance with the European Community standards listed below:

- Low-voltage Standard 2014/35/EU
- Electromagnetic Compatibility Standard 2014/30/EU
- RoHS 2011/65/EU Directive

➤ Product specifications

KFC-F

High-efficiency fan coil for flush-mount in-floor installation, fit for architectonic contexts with large glass walls requiring sun screening in summer or protection from uncomfortable cold drafts in winter. The fan coil creates an air barrier which envelopes the exposed glass surfaces to neutralize thermal discomfort. 2-pipe version, with right-side connections. DC inverter technology for very low energy consumptions and state-of-the-art operational stability. Version available with electronic board for wall remote control with fix speeds. "Open window" inlet for automatic deactivation and activation of the fan coil. Available with three different outputs. Hydraulic connections 3/4"E. Cooling total output: 1,21 / 1,62 / 2,12 kW. Heating output: 1,51 / 2,03 / 2,62 kW. Max working pressure: 10 bar. Air flow rate at max speed: 228 / 331 / 440 m³/h. Power supply voltage: 230 V / 1 ph / 50 Hz. Max static pressure available: 10 Pa. Max acoustic power: 53 / 54 / 55 dB. Dimensions (W x H x D): 895 x 431 x 189 mm / 1095 x 431 x 189 mm / 1295 x 431 x 189 mm Weight: 14 / 16 / 19 kg.

Complete with: galvanized metal case for concealed in-floor installation which enables to perform wiring and hydronic connections to install the unit; walkable covering grid that perfectly matches the case and includes a fix deflector to distribute the air flow; easy to remove for complete maintenance of the unit.

⚠ Safety Warning. Installation, commissioning and periodical maintenance of the product must be carried out by qualified operators in compliance with national regulations and/or local standards. A qualified installer must take all required measures, including use of Individual Protection Devices, for his and others' safety. An improper installation may damage people, animals or objects towards which Giacomini S.p.A. may not be held liable.

♻ Package Disposal. Carton boxes: paper recycling. Plastic bags and bubble wrap: plastic recycling.

ℹ Additional information. For more information, go to giacomini.com or contact our technical assistance service. This document provides only general indications. Giacomini S.p.A. may change at any time, without notice and for technical or commercial reasons, the items included herewith. The information included in this technical sheet do not exempt the user from strictly complying with the rules and good practice standards in force.

🗑 Product Disposal. Do not dispose of product as municipal waste at the end of its life cycle. Dispose of product at a special recycling platform managed by local authorities or at retailers providing this type of service.